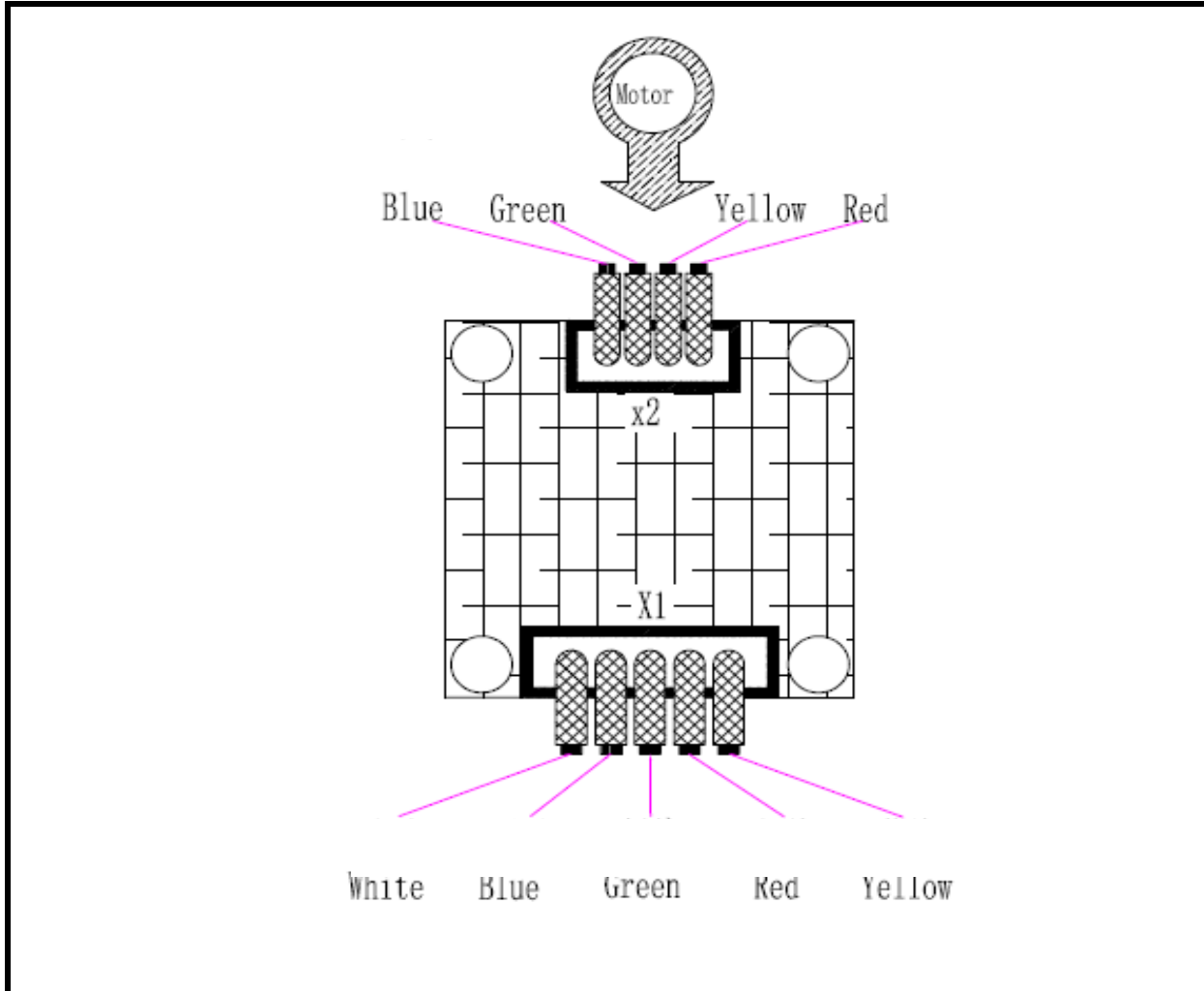


Connection



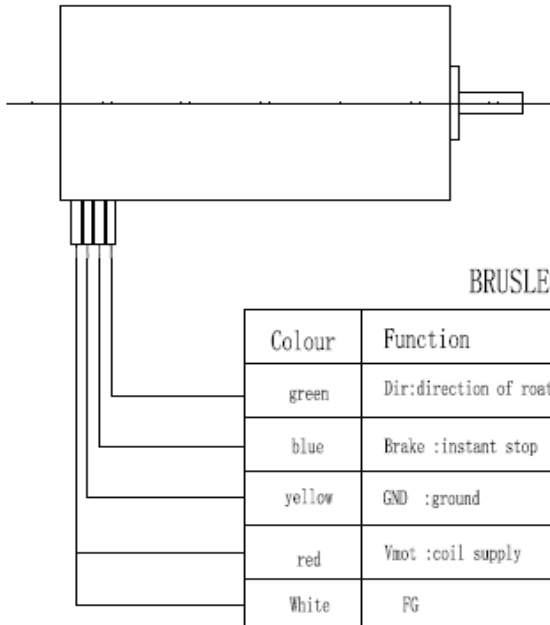
X2	Red	Motor phase of wire A
	Yellow	Motor phase of wire B
	Green	Motor phase of wire C
	Blue	Motor center of wire
X1	Yellow	(-) GND
	Red	(+): <17V Powr supply:<17V
	Green	Dirention Line: This wire will be connected the GND when the motor's need to rever the direction of turning direnction.
	Blue	Brake Line: This wire will be connected the GND when motor is running, and flat-out is break.
	Whiete	Speed Feedback: The speed values of frequency's pulses from motor's running of rotor.

Micro BLDC Driver



YDM-1802I

Drawing

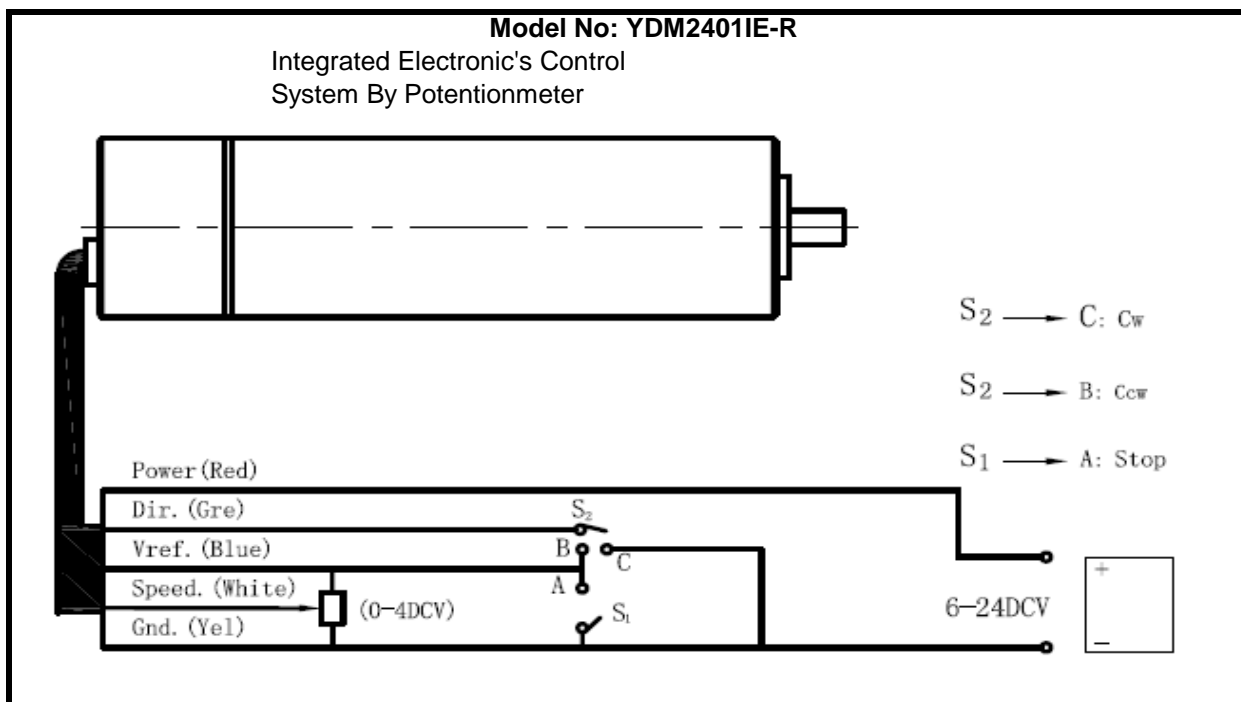
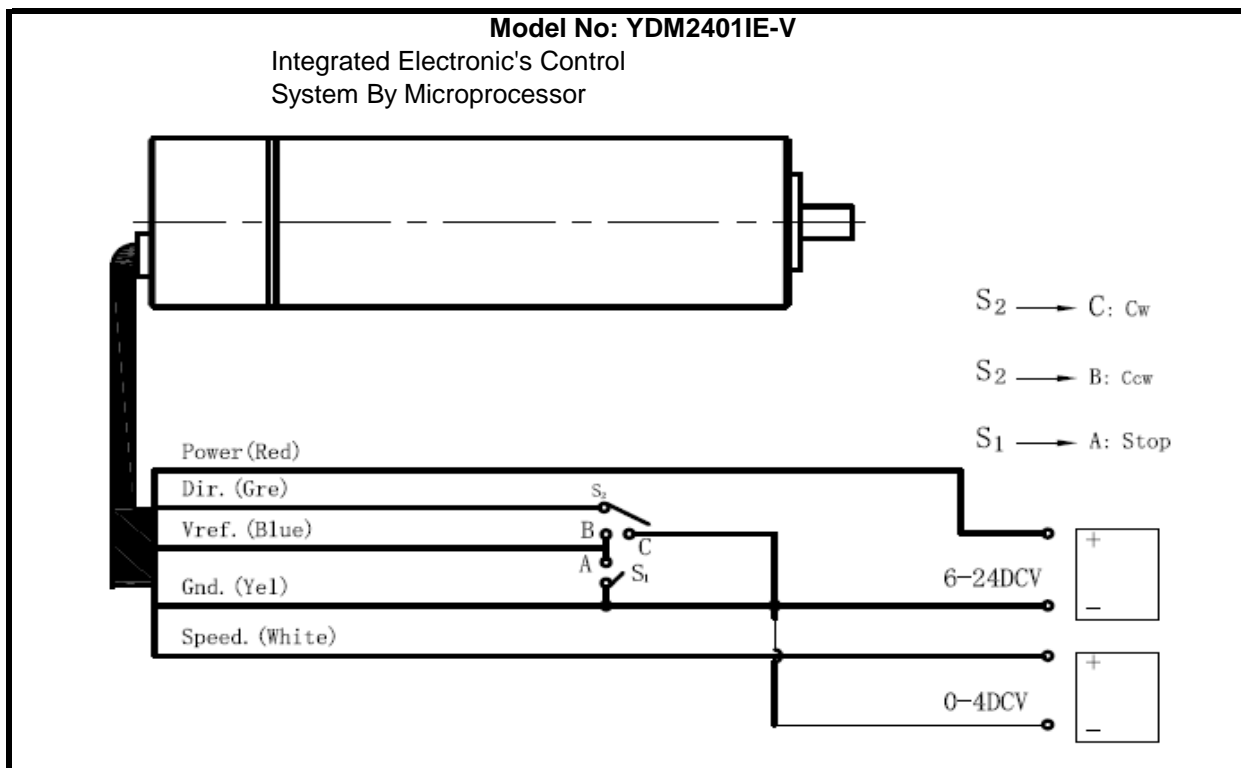


Note: Direction program

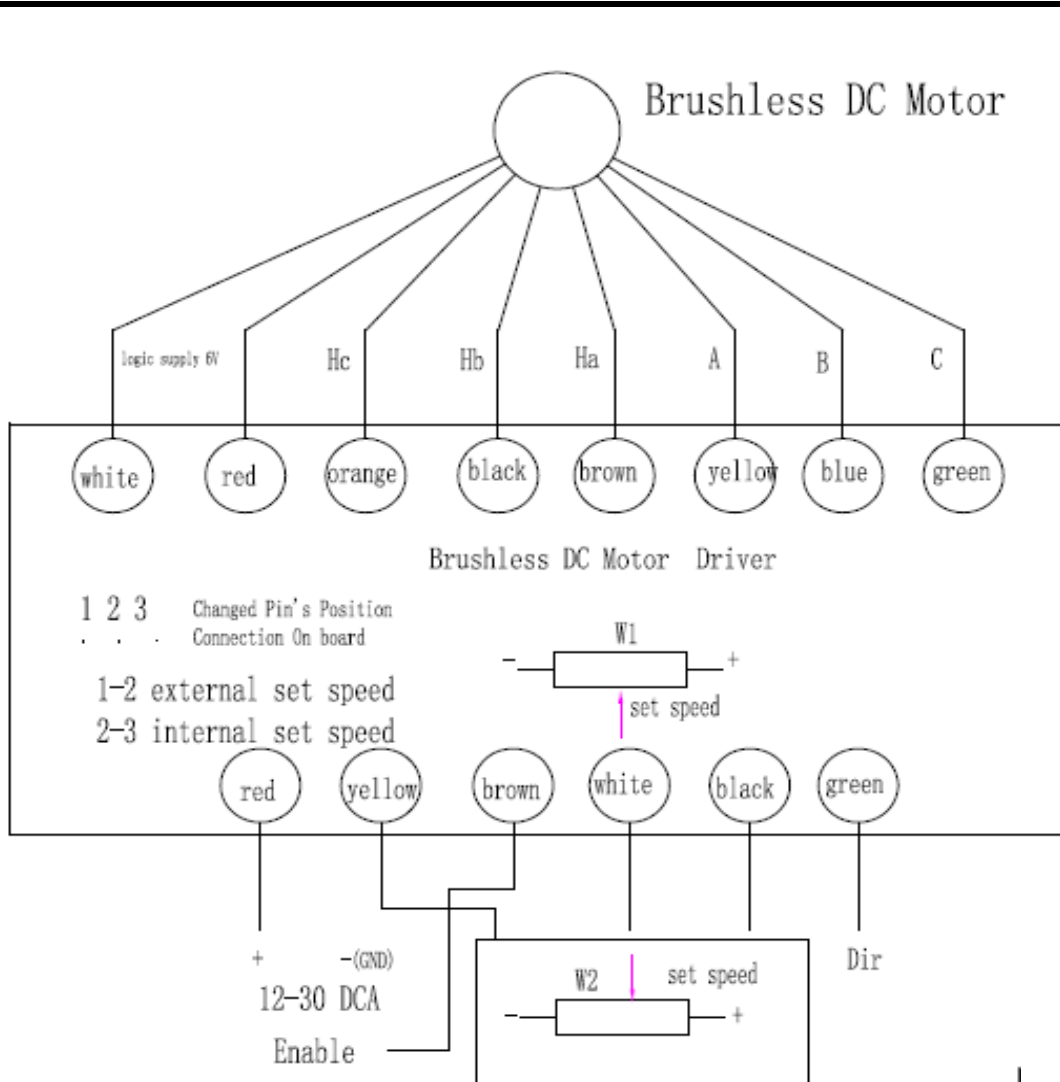
- (1) Brake is "off" and motor stoped;
- (2) Direction is :on" or "off":
- (3) Brake is "on" and motor running again.



Drawing



Connection



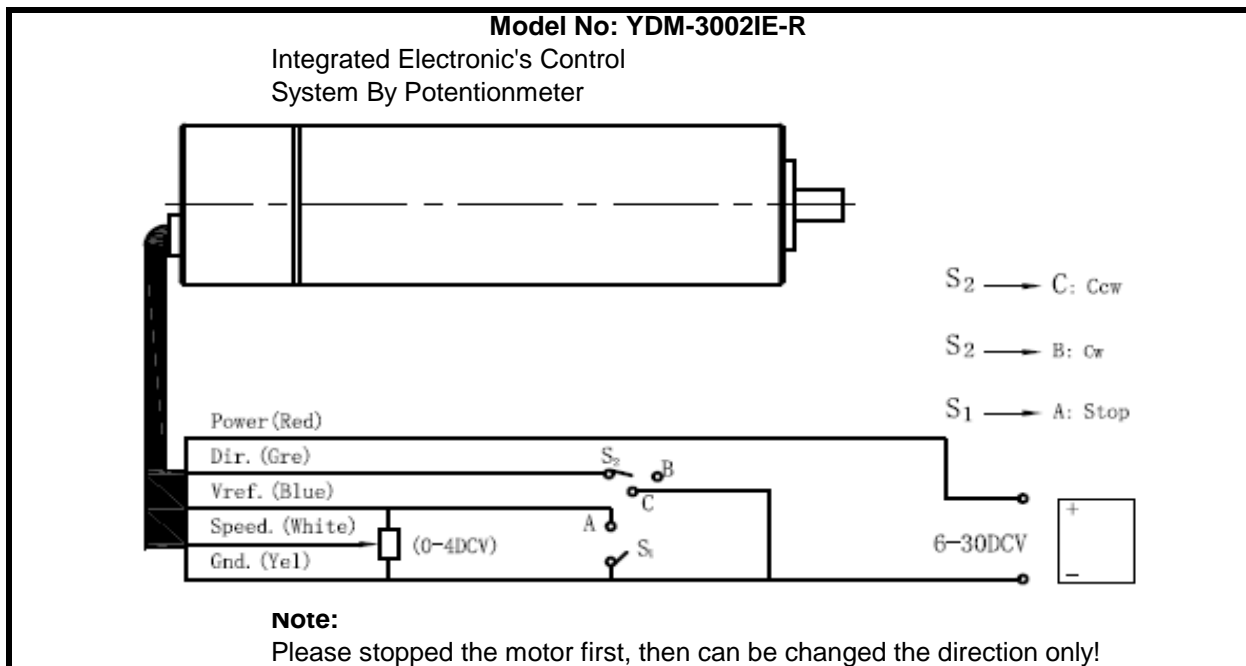
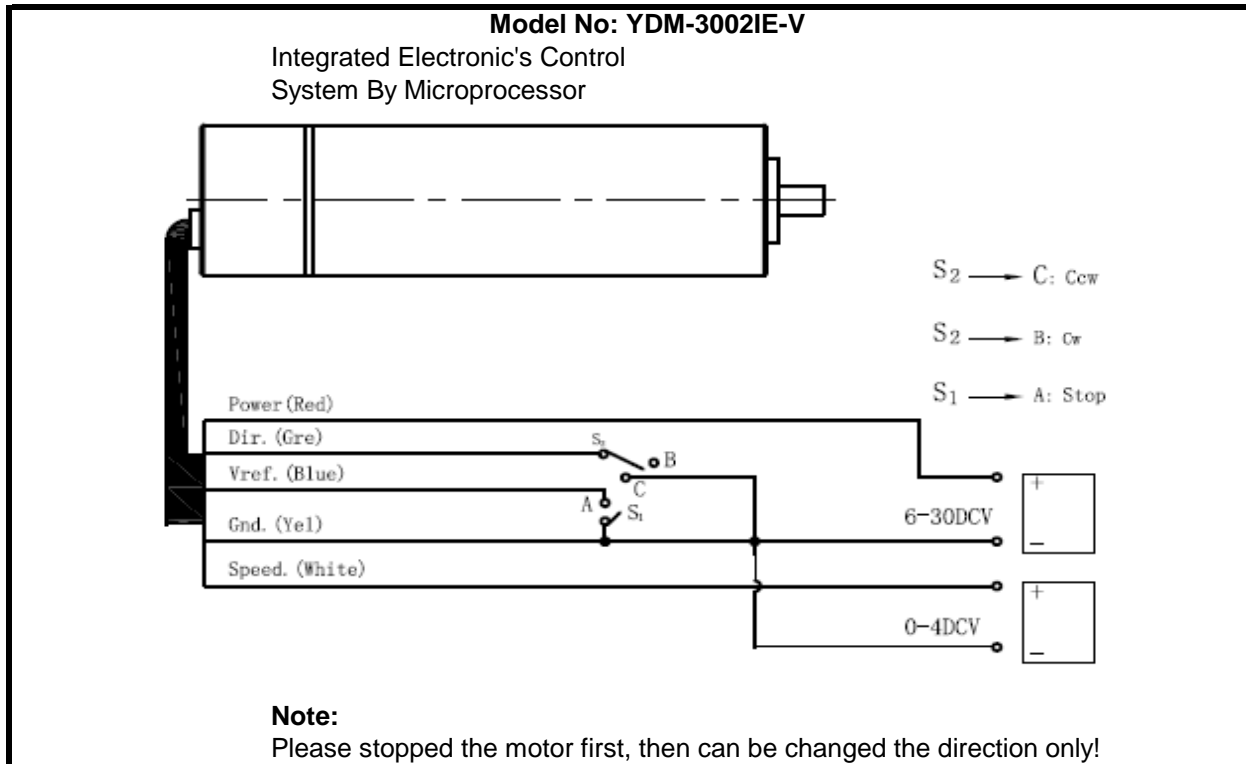
Note:

Brushless DC motor driver supply DC voltage $U_{min}=12V$ U_{max} -
 (2) When the customer need to adjusting the speed from
 microprocessor and input signal terminal is Brown & White,
 but White & Black is connected.

Dir	Connected with GND	Motor CCW
Dir	Open	Motor CW

A=Phase A B=Phase B C=Phase C
 Ha=Hall sensor A
 Hb=Hall sensor B
 Hc=Hall sensor C

Drawing



Drawing

