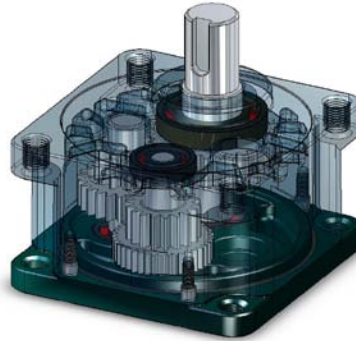


# Stepper Gear Box

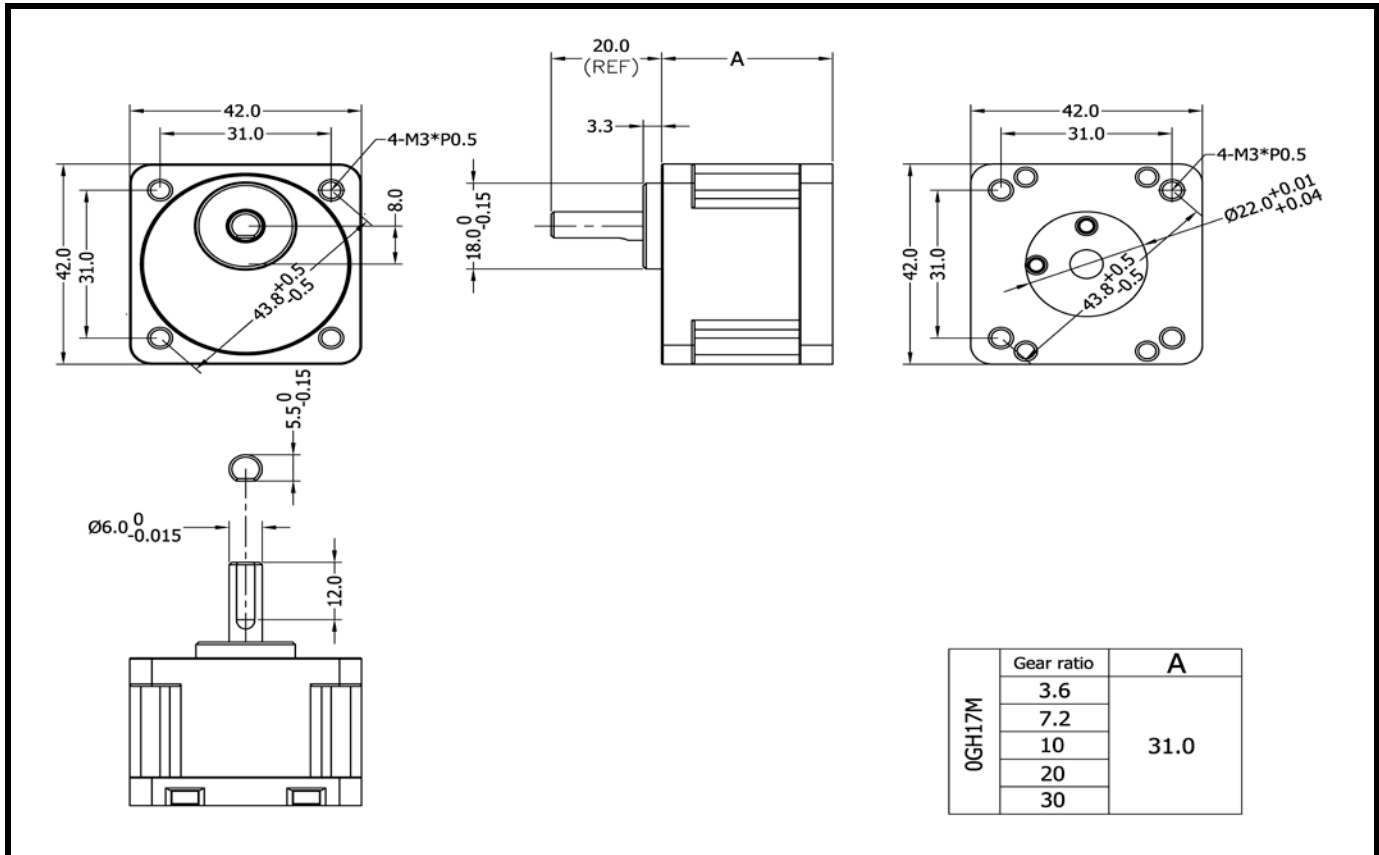


## EP42



Gear Ratio	1:3.6	1:7.2	1:10	1:20	1:30	1:50
Permissible Torque N.m(kgfcM)	0.35 (3.5)	0.7(7)	1.0(10)	1.5 (15)		
Permissible Thrust Force N (kg)	15(1.5)					
Permissible Loading Weight N(kg)	20 (2.0)					
Backlash	35(0.58°)	25 (0.42°)	20 (0.33°)			
Output Shaft Speed (r/min)	0~500	0~250	0~180	0~90	0~60	
A Dimension (mm)	31					

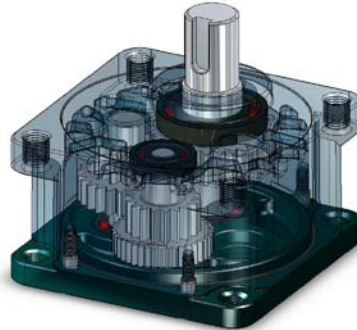
### DRAWING



# Stepper Gear Box



## EP60



Gear Ratio	1:3.6	1:7.2	1:10	1:20	1:30	1:50
Permissible Torque N.m(kgfcM)	1.25(12.5)	2.5(25)	3(30)	3.5(35)	4(40)	5(50)
Permissible Thrust Force N (kg)	40(4)					
Permissible Loading Weight N(kg)	100(10)					
Backlash	35(0.564°)	15(0.25°)		10(0.167°)		
Output Shaft Speed (r/min)	0~500	0~250	0~180	0~90	0~60	0~36
A Dimension (mm)	38			45.5		52.5

### DRAWING

Technical drawing showing three views of the EP60 Stepper Gear Box:

- Front View (Top Left):** Shows a square housing with dimensions 60.0 (width) and 49.5 (inner width). It features four M4\*P0.7 screws and a central shaft with a diameter of  $70^{+0.5}_{-0.5}$ . A distance of 10.0 is indicated from the center to the top edge.
- Side View (Top Middle):** Shows the housing profile with a reference dimension of 32.0 (REF) and a distance of 3.5 (REF) from the center to the top edge. The total width is labeled as 'A'.
- Front View (Top Right):** Shows the housing with dimensions 60.0 (width) and 49.5 (inner width). It features four M4\*P0.7 screws and a central shaft with a diameter of  $70^{+0.5}_{-0.5}$ . A distance of 10.0 is indicated from the center to the top edge. A hole diameter is specified as  $\phi 54.0^{+0.01}_{+0.04}$ .
- Shaft View (Bottom Left):** Shows the output shaft with a diameter of  $\phi 10.0^{+0.004}_{-0.018}$  and a length of 25.0. A distance of 4.0<sup>+0.04</sup><sub>0</sub> is indicated from the center to the top edge, and a distance of 3.0<sup>+0.1</sup><sub>0</sub> is indicated from the center to the bottom edge.

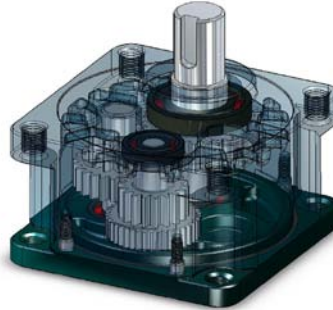
2GH23M	Gear ratio	A
	3.6	38.0
	7.2	
	10	
	20	45.5
	30	
50		



# Stepper Gear Box



## EP90



Gear Ratio	1:3.6	1:7.2	1:10	1:20	1:30	1:50
Permissible Torque N.m(kgfcM)	15(150)			20(200)		
Permissible Thrust Force N (kg)	100(10)					
Permissible Loading Weight N(kg)	300(30)					
Backlash	25(0.417°)	15(0.25°)		10(0.167°)		
Output Shaft Speed (r/min)	0~500	0~250	0~180	0~90	0~60	0~36
A Dimension (mm)	57			69.5		80

### DRAWING

Technical drawing showing front, side, and shaft views of the EP90 stepper gear box. Dimensions and tolerances are provided for various features.

Front View Dimensions: 90.7 (total width), 73.5 (inner width), 4-M8\*P1.25 (mounting holes), 18.0 (height), 104.0<sup>+0.5</sup>/<sub>-0.5</sub> (outer diameter), 42.0 (REF) (total length), 7.0 (REF) (reference length), A (dimension).

Side View Dimensions: 90.7 (total width), 73.5 (inner width), 4-M8\*P1.25 (mounting holes), 18.0 (height), 104.0<sup>+0.5</sup>/<sub>-0.5</sub> (outer diameter), 63.0<sup>+0.01</sup>/<sub>+0.04</sub> (inner diameter).

Shaft View Dimensions: 6.0<sup>+0.04</sup>/<sub>0.00</sub> (height), 3.5<sup>+0.1</sup>/<sub>0.0</sub> (height), 18.0 (height), 25.0 (length), 18.0<sup>0.000</sup>/<sub>0.018</sub> (diameter).

Gear ratio	A
10	
15	
20	69.5
30	
50	
100	80

