

Non Captive Shaft Actuator



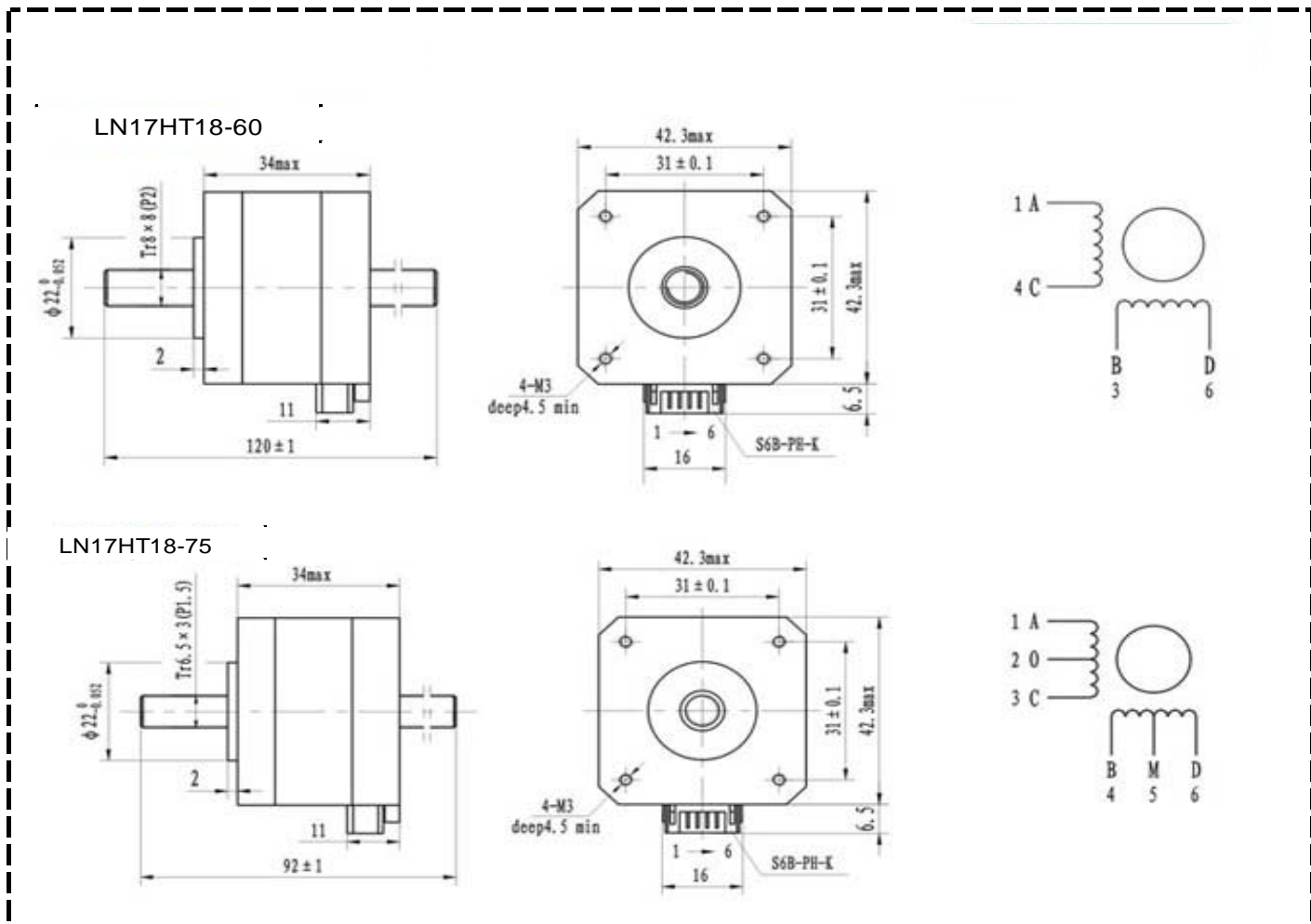
LN17 Series



Specification

Model	Step Angle	Phase	Step Length	Rated Current	Resistance Per Phase	Inductance Per Phase	Detent Torque	Rotor Inertia	Motor Mass
			mm	A	Ω	mH	mN.m	g.cm ²	g
LN17HT18-60	1.8°	2	0.04	0.6	22	28	12	38	0.2
LN17HT18-75	1.8°	4	0.015	0.75	4.2	2.5	12	38	0.2

Outline Drawing



Non Captive Shaft Actuator



LN23 Series



Specification

Model	Step Angle	Rated Current	Resistance Per Phase	Induction Per Phase	Holding Torque	Wiring Diagram	Motor Mass	Gear Reduction Ratio	
		A	Ω	mH	mN.m		g		
LN23HT18-70	1.8°	0.7	12	40	7	a	0.35	1:10	
LN23HT18-130	1.8°	1.3	3.1	5	3.5	b	0.35	1:30	

Outline Drawing

