

# DC Gear Motor Series



12VDC Standard

## GPGFP3858-10

Output Power: **5.0W**  
Weight: **900-950g**



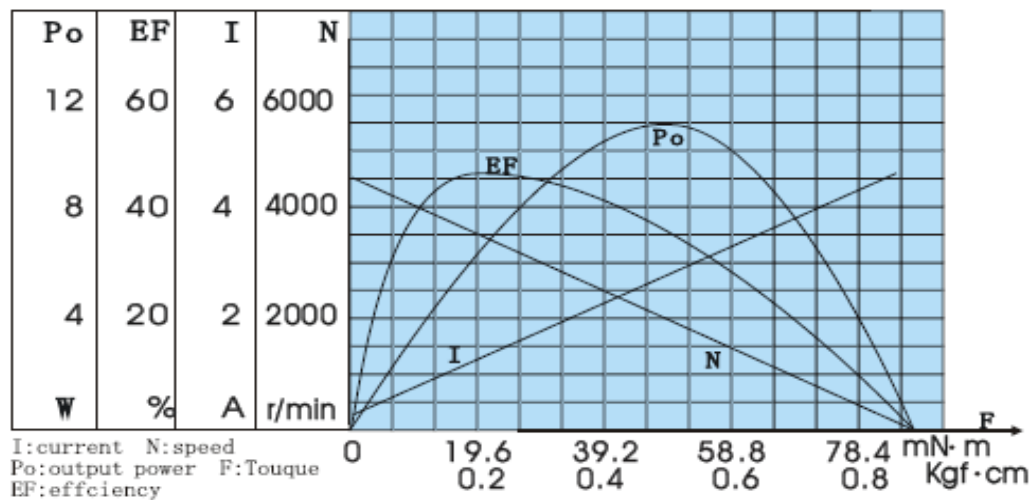
### MOTOR INSTALLATION

Rated voltage	12VDC
No load speed	4500rpm
No load current	220mA
Rated torque	200g-cm (19.6mN·m)
Rated current	1.3A
Rated speed	3350 rpm
Stall torque	800g-cm (78.4mN·m)
Stall current	4.8A

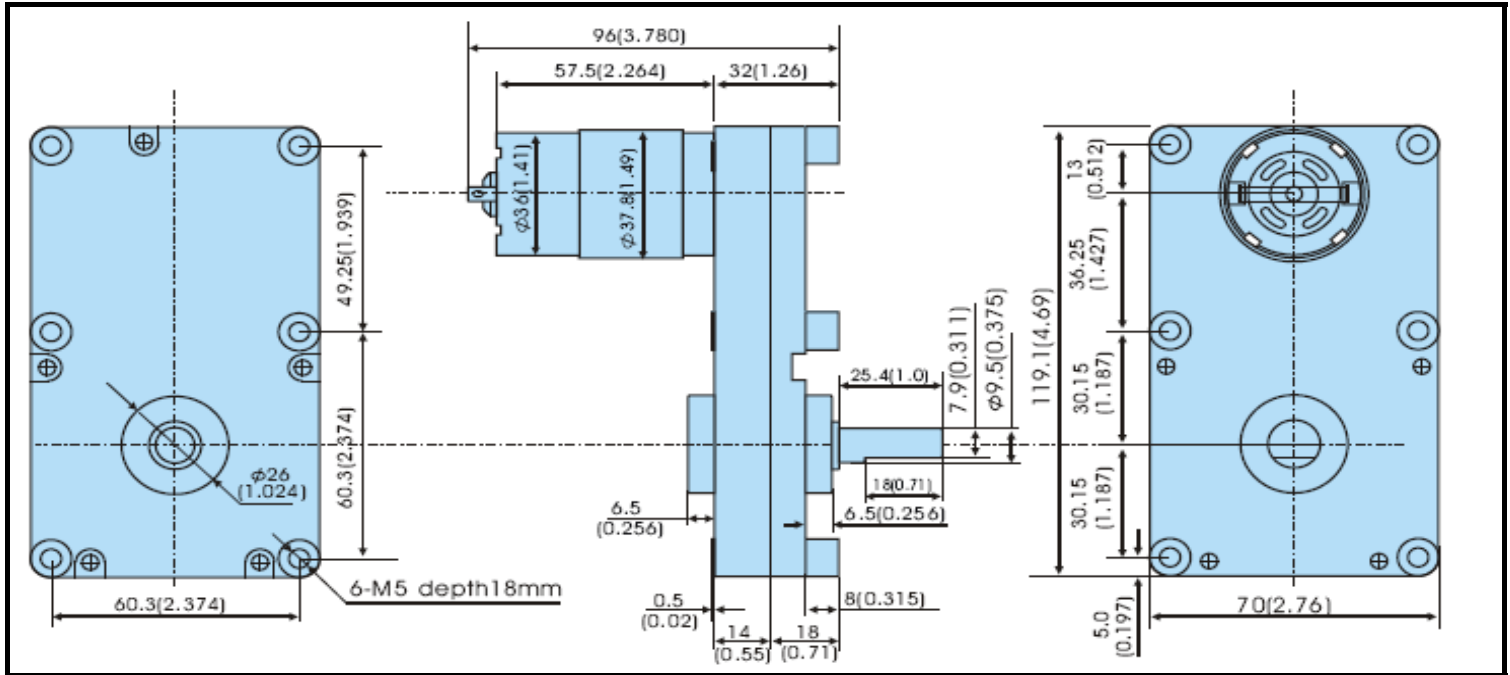
### SPECIFICATIONS

Geared motor name	Rated Volt. V	No Load		At Max. Efficiency				Reduction Ratio	Output power W	Number of gear Stages
		Current mA	Speed rpm	Current mA	Speed rpm	Torque				
						Kg-cm	N-m			
GPGFP3858-10-5-134	12	≤220	33.5	≤1300	25	19.6	1.9	1/134	4.9	3
GPGFP3858-10-4-394	12	≤220	11.4	≤1300	8.5	52	5.1	1/394	4.4	4
GPGFP3858-10-4-494	12	≤220	9.1	≤1300	6.8	65.2	6.4	1/494	4.4	4
GPGFP3858-10-4-664	12	≤220	6.8	≤1300	5	87.6	8.6	1/664	4.4	4
GPGFP3858-10-4-1269	12	≤220	3.5	≤1300	2.6	150	14.7	1/1269	3.9	5
GPGFP3858-10-4-1927	12	≤220	2.3	≤1100	1.8	200	19.6	1/1927	3.6	5
Packing Details	CTN size:31X30XH28CM 12pcs/CTN N.W. 11Kgs									

### MOTOR CHARACTERISTICS



**DRAWING**



# DC Gear Motor Series



24VDC Standard

## GPGFP3858-11

Output Power: **5.0W**  
Weight: **900-950g**



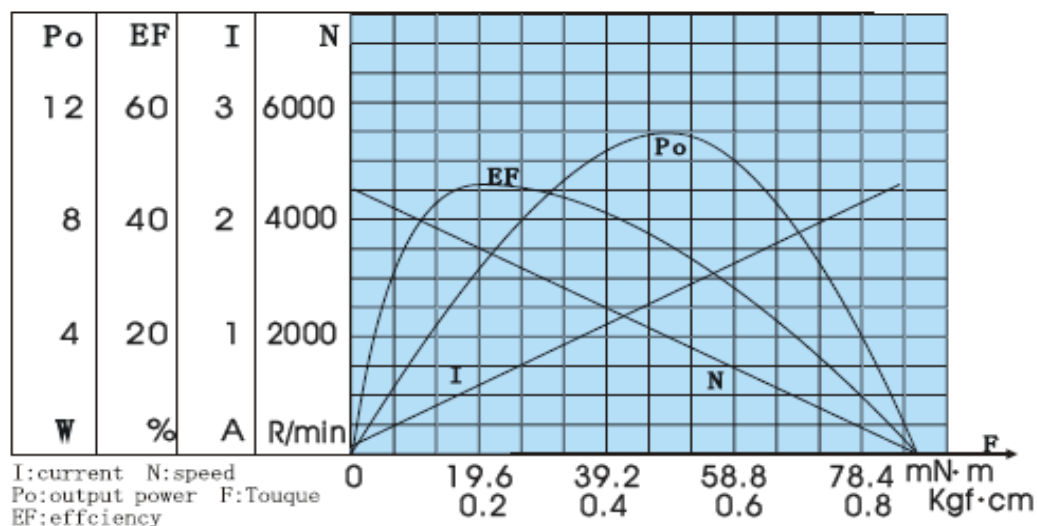
### MOTOR INSTALLATION

Rated voltage	24VDC
No load speed	4500rpm
No load current	110mA
Rated torque	200g-cm (19.6mN·m)
Rated current	700mA
Rated speed	3350rpm
Stall torque	800g-cm (78.4mN·m)
Stall current	2.2A

### SPECIFICATIONS

Geared motor name	Rated Volt. V	No Load		At Max. Efficiency				Reduction Ratio	Output power W	Number of gear Stages
		Current mA	Speed rpm	Current mA	Speed rpm	Torque				
						Kg-cm	N·m			
GPGFP3858-11-5-134	24	≤110	33.5	≤700	25	19.6	1.9	1/134	4.9	3
GPGFP3858-11-4-394	24	≤110	11.4	≤700	8.5	52	5.1	1/394	4.4	4
GPGFP3858-11-4-494	24	≤110	9.1	≤700	6.8	65.2	6.4	1/494	4.4	4
GPGFP3858-11-4-664	24	≤110	6.8	≤700	5	87.6	8.6	1/664	4.4	4
GPGFP3858-11-4-1269	24	≤110	3.5	≤700	2.6	150	14.7	1/1269	3.9	5
GPGFP3858-11-4-1927	24	≤110	2.3	≤700	1.8	200	19.6	1/1927	3.6	5
Packing Details	CTN size:31X30XH28CM 12pcs/CTN N.W. 11Kgs									

### MOTOR CHARACTERISTICS





# DC Gear Motor Series



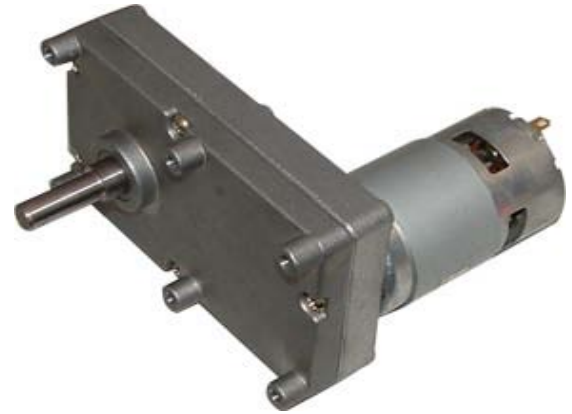
12VDC Standard

## GPGFP4468-10

Output Power: **5.0W**  
Weight: **1000~1100g**

### MOTOR INSTALLATION

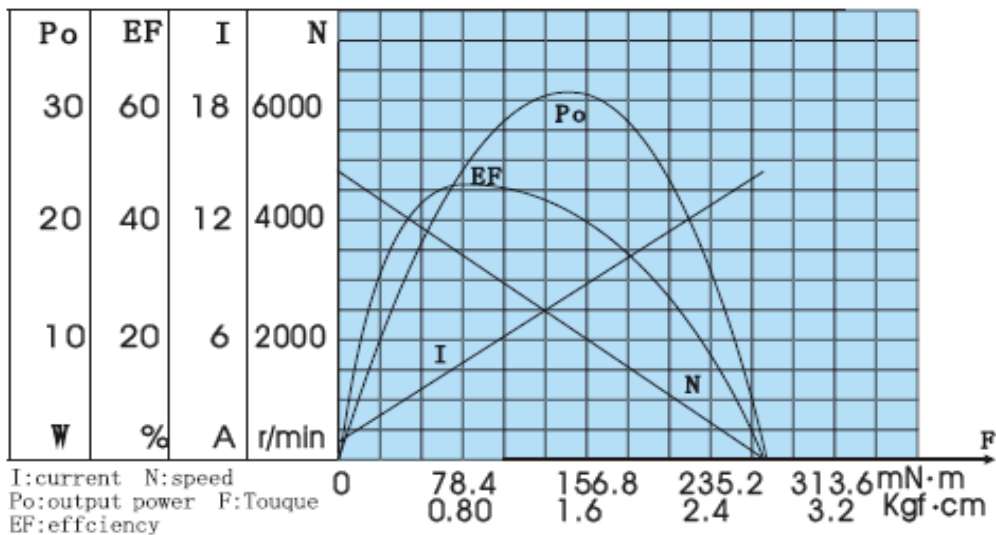
Rated voltage	12VDC
No load speed	5000rpm
No load current	600mA
Rated torque	650g-cm (63.7mN·m)
Rated current	4.0A
Rated speed	3750rpm
Stall torque	2700g-cm (264.6mN·m)
Stall current	14.0A



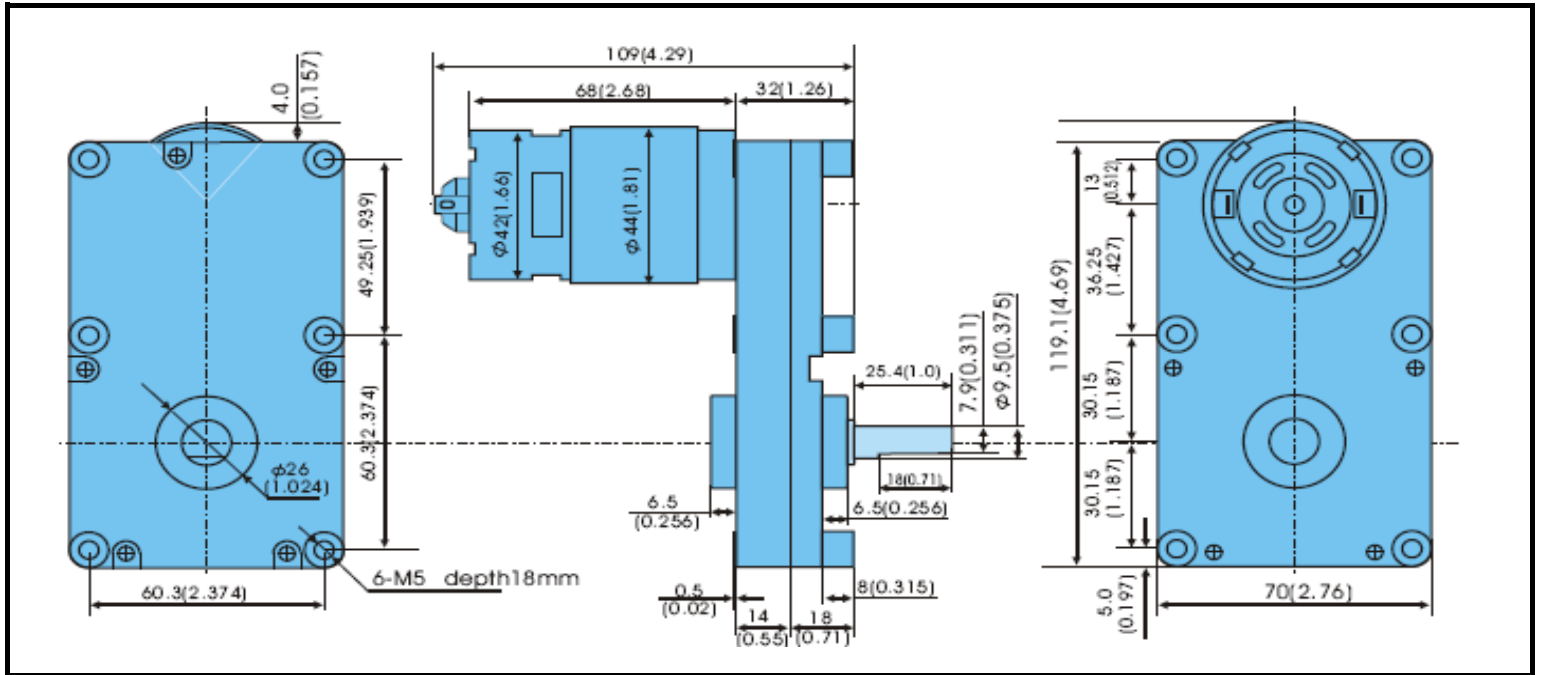
### SPECIFICATIONS

Geared motor name	Rated Volt. V	No Load		At Max. Efficiency				Reduction Ratio	Output power W	Number of gear Stages
		Current	Speed	Current	Speed	Torque				
		mA	rpm	mA	rpm	Kg-cm	N·m			
GPGFP4468-10-18-134	12	≤600	37	≤4	28	63.5	6.22	1/134	17.8	3
GPGFP4468-10-16-394	12	≤600	12.7	≤4	9.5	169	16.6	1/394	16.1	4
GPGFP4468-10-15-494	12	≤600	10	≤3.8	7.7	200	19.6	1/494	15.4	4
GPGFP4468-10-12-664	12	≤600	7.5	≤3.1	6.2	200	19.6	1/664	12.4	4
GPGFP4468-10-10-863	12	≤600	5.2	≤2.8	5	200	19.6	1/863	10	5
GPGFP4468-10-7-2031	12	≤600	2.5	≤1.3	2.3	200	19.6	1/2031	4.6	5
Packing Details	CTN size:31X30XH28CM 12pcs/CTN N.W. 15Kgs									

### MOTOR CHARACTERISTICS



**DRAWING**



9812 Whithorn Dr., Houston, TX 77095, Phone: 281.855.2218, Fax: 281.859.8825, Email: [motors@telcointercon.com](mailto:motors@telcointercon.com)

# DC Gear Motor Series



24VDC Standard

## GPGFP4468-11

Output Power: **5.0W**  
Weight: **1000~1100g**



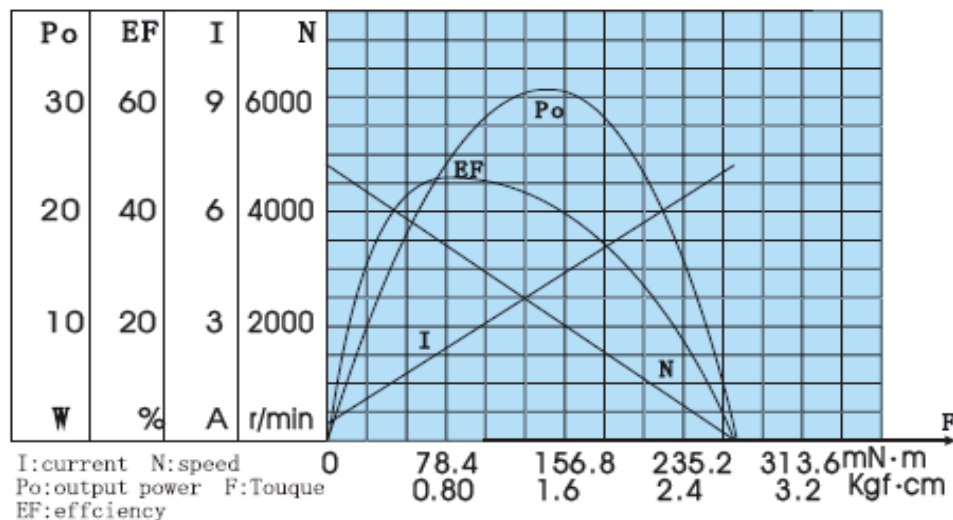
### MOTOR INSTALLATION

Rated voltage	24VDC
No load speed	5000rpm
No load current	250mA
Rated torque	650gf·cm 63.7mN·m
Rated current	2.0A
Rated speed	3750r/min
Stall torque	2700gf·cm 264.6mN·m
Stall current	7.0A

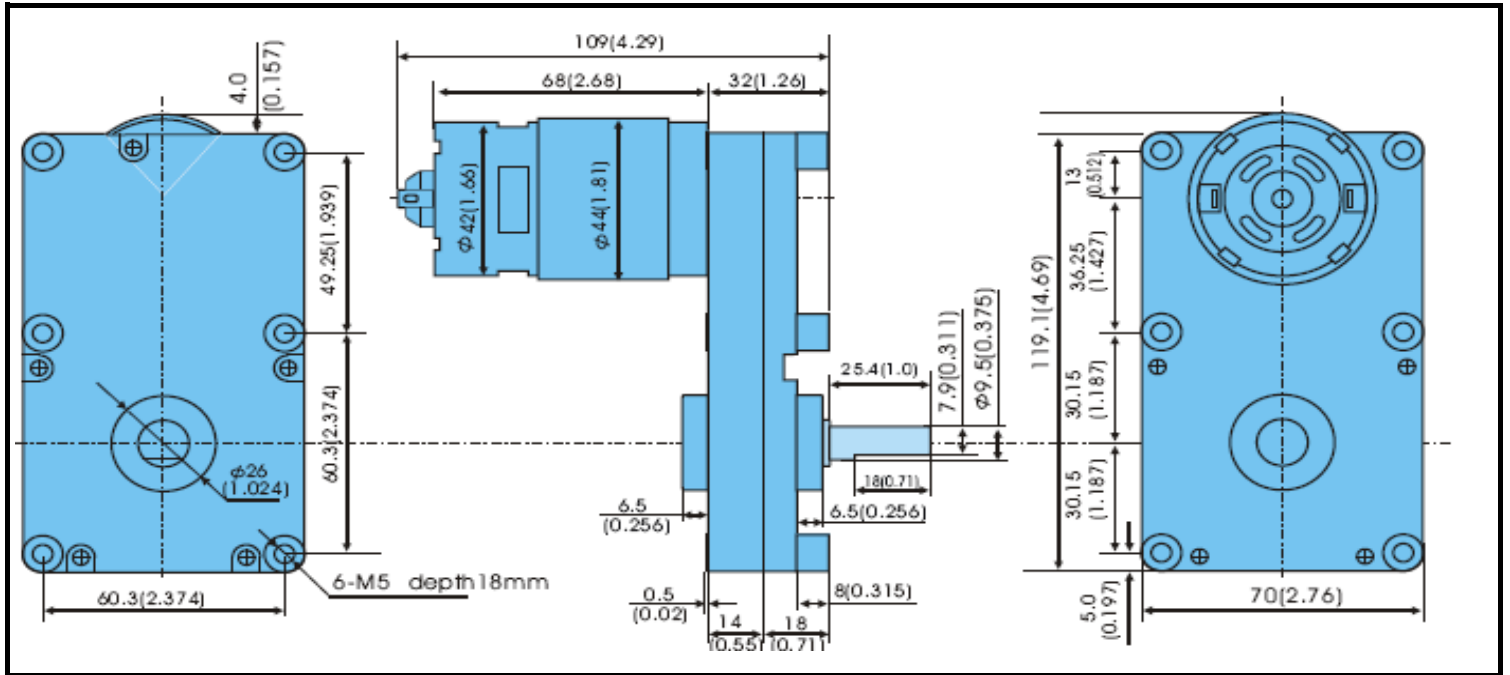
### SPECIFICATIONS

Geared motor name	Rated Volt. V	No Load		At Max. Efficiency				Reduction Ratio	Output power W	Number of gear Stages
		Current	Speed	Current	Speed	Torque				
		mA	rpm	mA	rpm	Kg·cm	N·m			
GPGFP4468-11-18-134	24	≤300	37	≤2	28	63.5	6.22	1/134	17.8	3
GPGFP4468-11-16-394	24	≤300	12.7	≤2	9.5	169	16.6	1/394	16.1	4
GPGFP4468-11-15-494	24	≤300	10	≤1.9	7.7	200	19.6	1/494	15.4	4
GPGFP4468-11-12-664	24	≤300	7.5	≤1.6	6.2	200	19.6	1/664	12.4	4
GPGFP4468-11-10-863	24	≤300	5.2	≤1.4	5	200	19.6	1/863	10	5
GPGFP4468-11-7-2031	24	≤300	2.5	≤0.6	2.3	200	19.6	1/2031	4.6	5
Packing Details	CTN size:31X30XH28CM 12pcs/CTN N.W. 15Kgs									

### MOTOR CHARACTERISTICS



**DRAWING**



# AC Gear Motor Series



Shade Pole Motor

## GPGFAS6125

Output Power: **1.0-10W**  
Weight **1450~1700g**



### SPECIFICATIONS

Reduction Ratio	L (mm)	1/4	1/14	1/19	1/29	1/62	1/72	1/84	1/104	1/128	1/157	1/231
Rated Speed(rpm)at 60Hz		20.1	10.7	6.9	5.5	4.6	3.8	2.1	1.7	1.4	1.0	0.9
Number of geartrans		3	4	4	4	4	4	5	5	5	5	5
Rated Torque (kg-cm)	10.5	5.9	10	15.6	19.6	23.2	28.5	44.9	56.7	68.2	95.9	109
	12	7.8	13.4	20.8	26.1	31	38	59.9	75.6	90.9	127	145
	14.5	9.8	16.7	26	32.6	38.7	47.5	74.9	94.5	113	159	182
	16.5	13.7	23.4	36.4	45.6	54.2	66.5	104	132	159	200	200
	20.5	17.6	30.1	46.8	58.7	69.7	85.5	134	170	200	200	200
	25.5	21.5	36.7	57.2	71.7	85.2	104	164	200	200	200	200
	30.5	27.4	46.8	72.8	91.3	108	133	200	200	200	200	200
	35.5	34.2	58.4	91	114	135	166	200	200	200	200	200
40	39.1	66.8	104	130	155	190	200	200	200	200	200	

### DRAWING

