

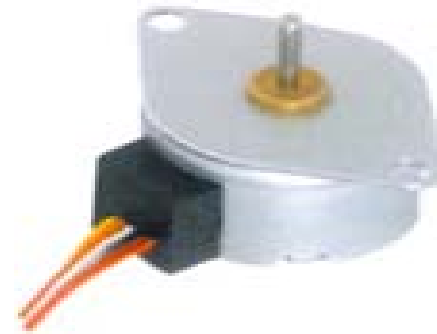
PM Stepper Motor



2P20150-013

General specification

Step angle accuracy	+/- 8% (full step, no load)
Resistance accuracy	+/-7%
Inductance accuracy	+/- 20%
Temperature rise	80°C Max. (Rated current, 2 phase on)
Ambient temperature	20°C ~+ 50°C
Insulation resistance	100MΩ Min, 500VDC
Dielectric strength	500VAC / minute
Shaft Radial play	0.06 Max. (450g-load)
Shaft Axial play	0.08 Max. (450g-load)
Insulation Class	E for Coils

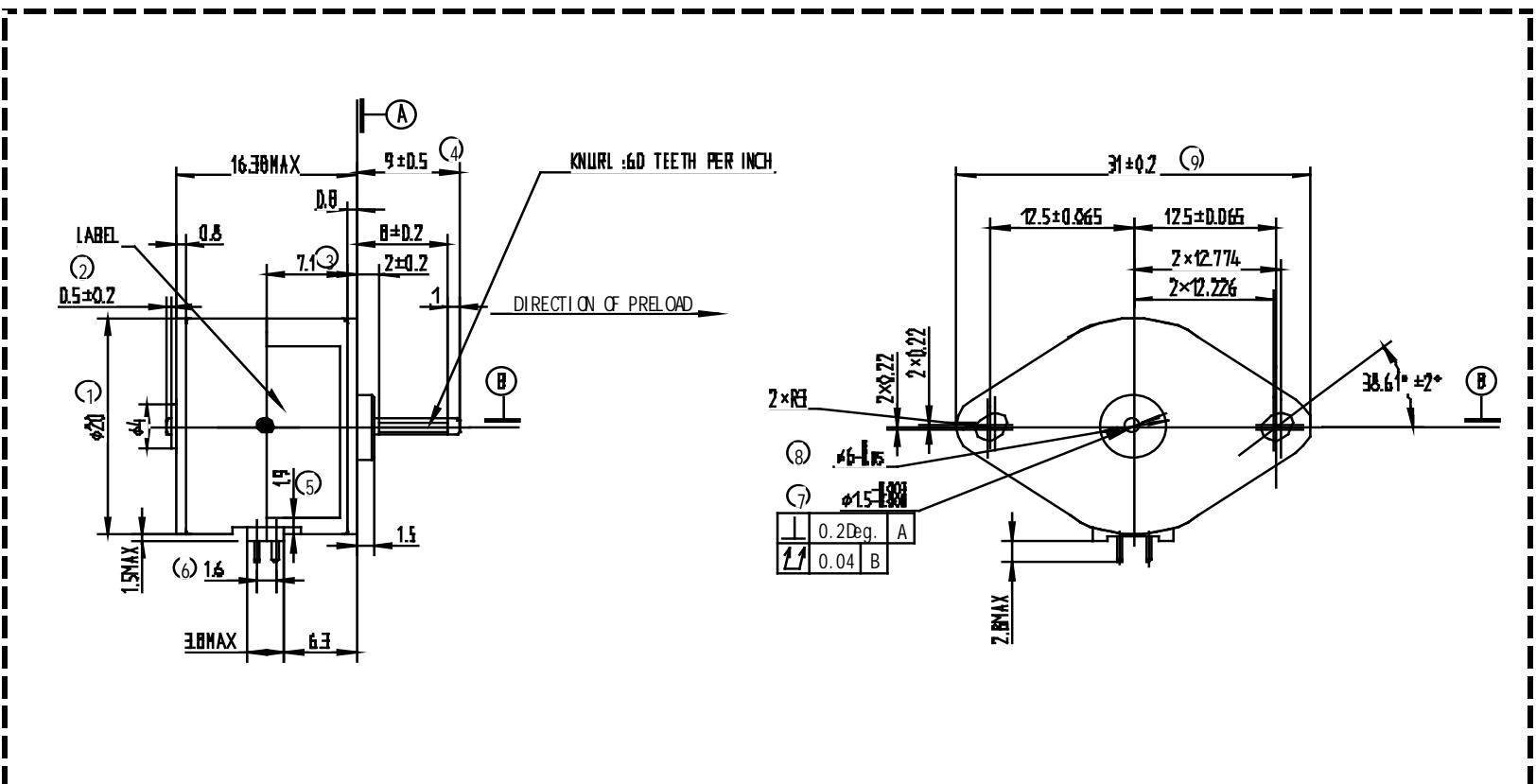


Specification

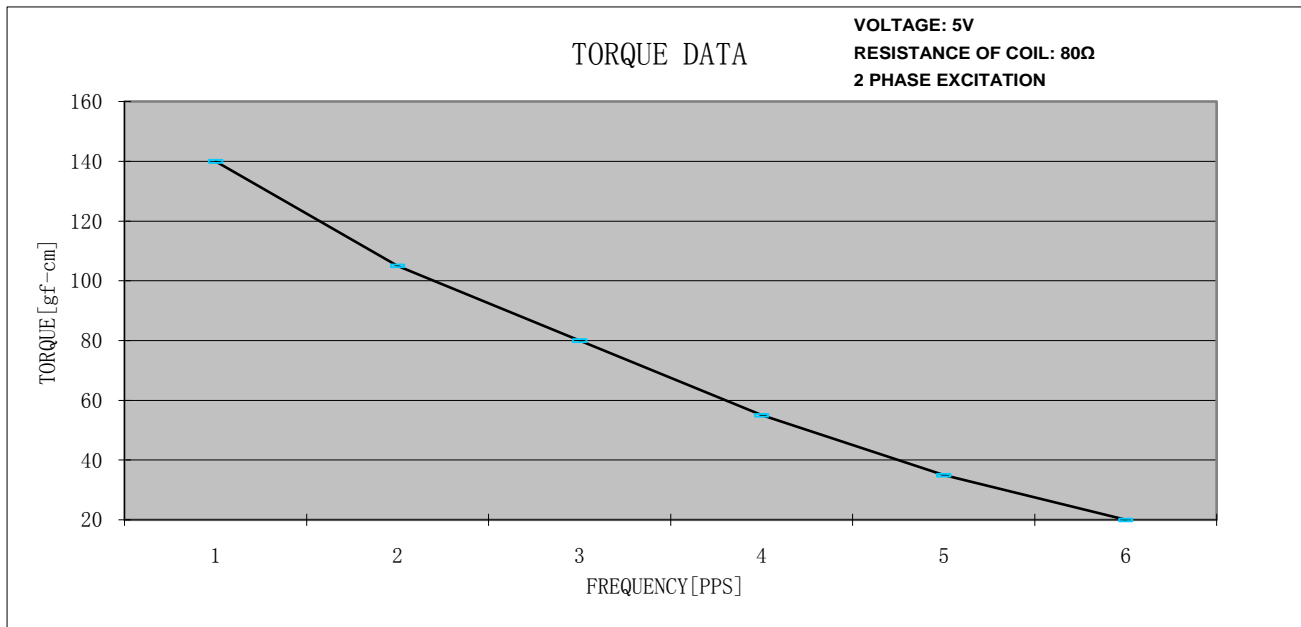
Model	Voltage	Phase	Current	Step angle	Resistance at 25C	Holding torque	Pull in Torque	Pull out Torque
	(v)		(A)	(degree)	(Ω)	(min. gf.cm)	(min. gf.cm)	(min. gf.cm)
2P20150-013	10.2	2	0.125	15	80	79		48

Outline Drawing

Dimension (Units:mm)



Performance Curve



Frequency (pps)	Pull Out Torque (gf-cm)
100	140
150	105
200	80
250	55
300	35
350	20

