

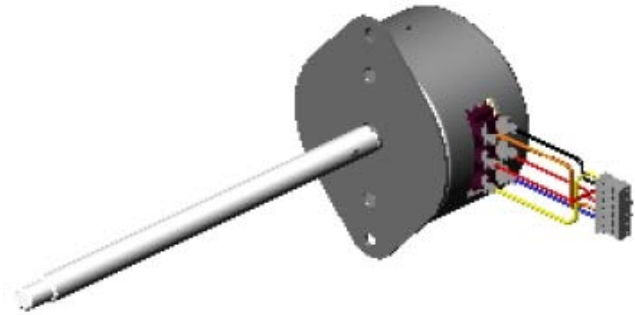
# PM Stepper Motor



2P42113-150

## General specification

Step angle accuracy	+/- 8% (full step, no load)
Resistance accuracy	+/-10%
Inductance accuracy	+/- 20%
Temperature rise	80°C Max. ( Rated current, 2 phase on)
Ambient temperature	20°C ~+ 50°C
Insulation resistance	100MΩ Min, 500VDC
Dielectric strength	500VAC / minute
Shaft Radial play	0.06 Max. ( 450g-load)
Shaft Axial play	0.08 Max. ( 450g-load)
Insulation Class	E for Coils

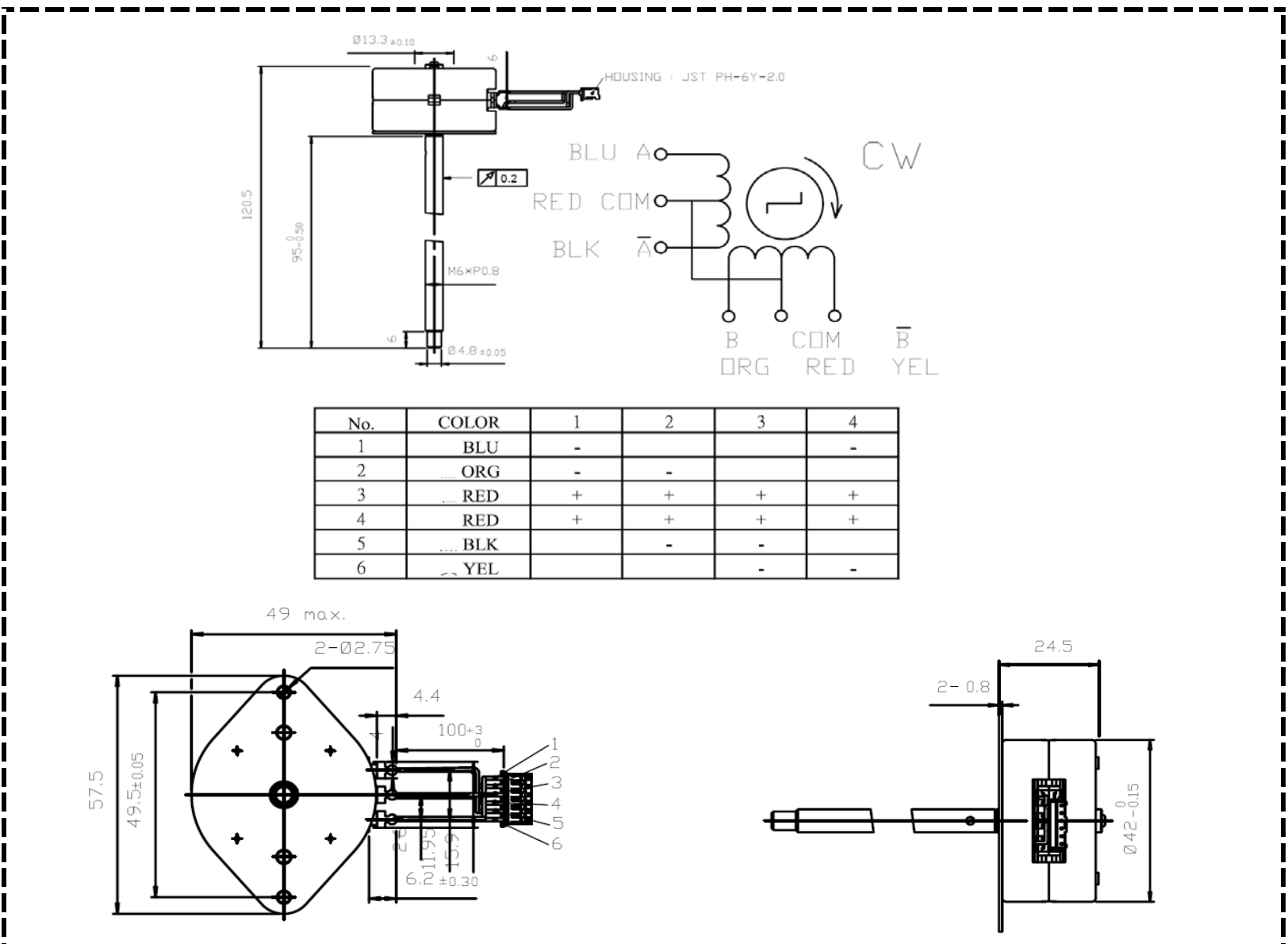


## Specification

Model	Voltage	Phase	Current	Step angle	Resistance at 25C	Holding torque	Pull in Torque	Pull out Torque
	(v)		(A)	(degree)	(Ω)	( min. gf.cm)	( min. gf.cm)	( min. gf.cm)
2P42113-150	12	2	1.5/phase	11.25	15			

## Outline Drawing

Dimension ( Units:mm )



# Performance Curve

