

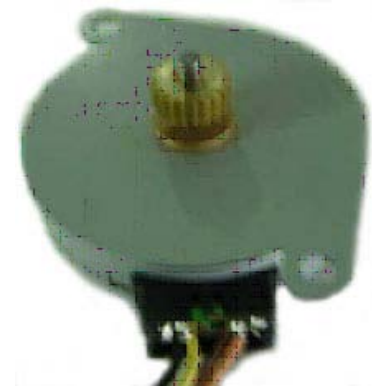
PM Stepper Motor



4P4275-080

General specification

Step angle accuracy	+/- 8% (full step, no load)
Resistance accuracy	+/-10%
Inductance accuracy	+/- 20%
Temperature rise	80°C Max. (Rated current, 2 phase on)
Ambient temperature	20°C ~+ 50°C
Insulation resistance	100MΩ Min, 500VDC
Dielectric strength	500VAC / minute
Shaft Radial play	0.06 Max. (450g-load)
Shaft Axial play	0.08 Max. (450g-load)
Insulation Class	E for Coils

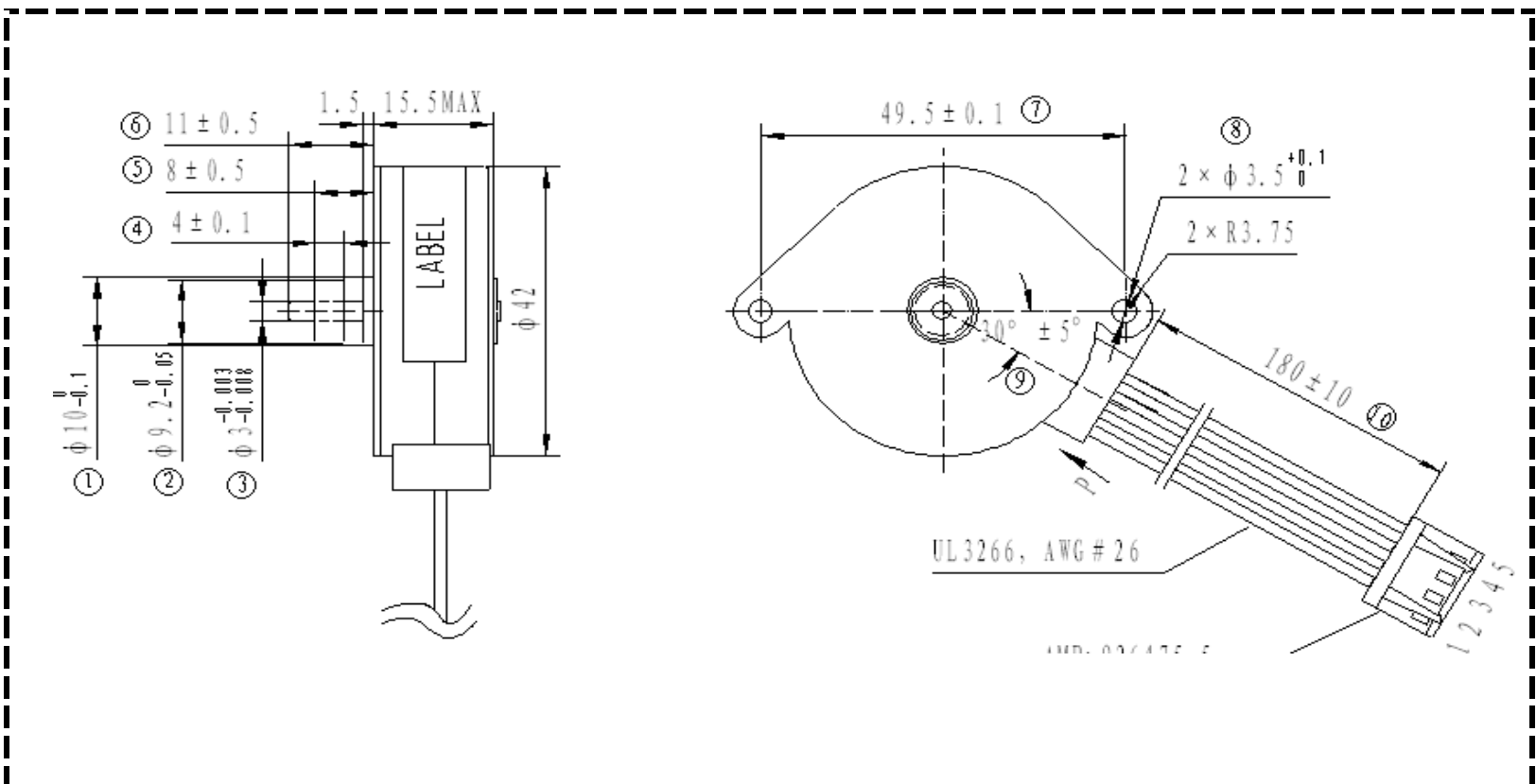


Specification

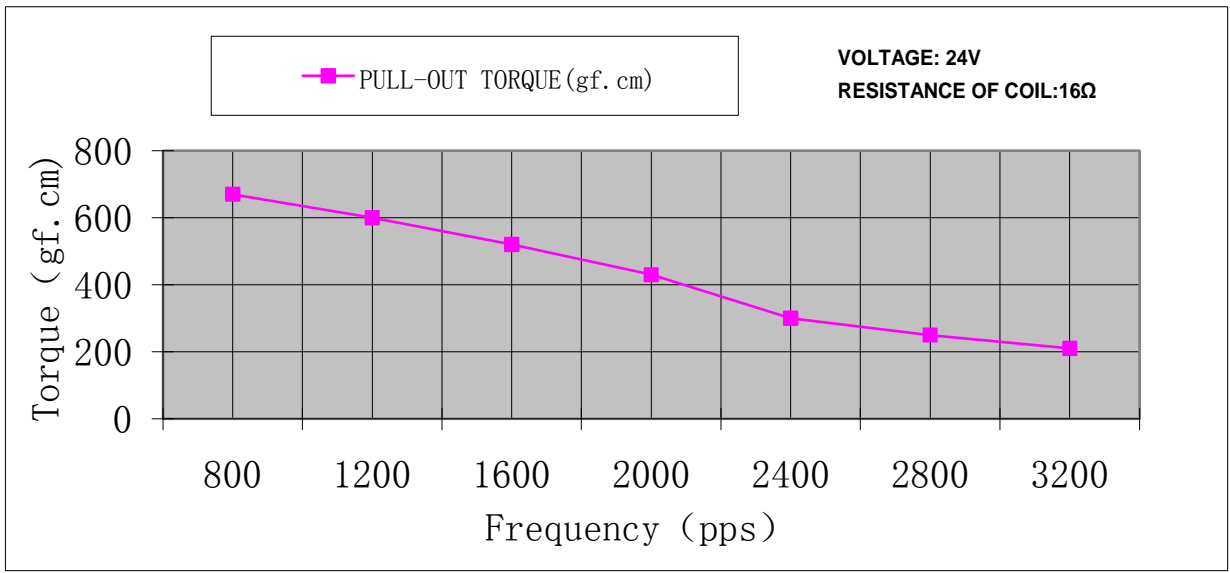
Model	Voltage	Phase	Current	Step angle	Resistance at 25C	Holding torque	Pull in Torque	Pull out Torque
	(v)		(A)	(degree)	(Ω)	(min. gf.cm)	(min. gf.cm)	(min. gf.cm)
4P4275-080	24	4	0.8	7.5 ±0.5	16	1050		460

Outline Drawing

Dimension (Units:mm)



Performance Curve



Frequency (pps)	Pull Out Torque (gf-cm)
400	720
800	670
1200	600
1600	520
2000	430
2400	300
2800	250
3200	210

