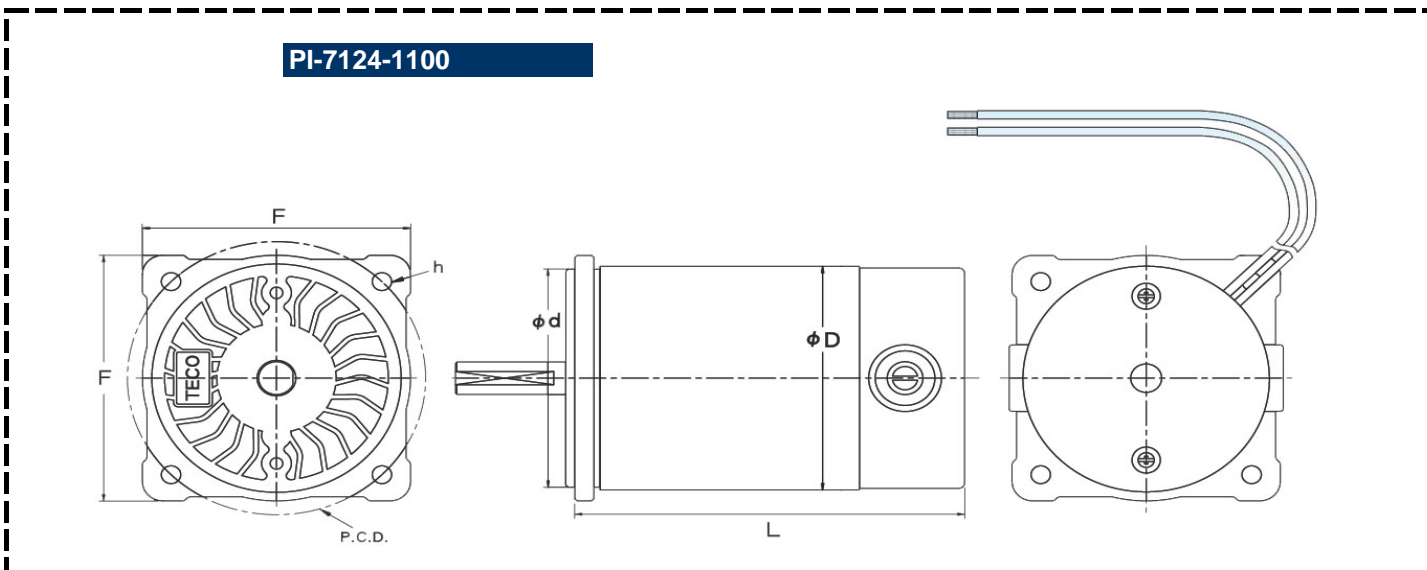




Specification

Model No.	Voltage	No-Load		Load			Max. Output
		Speed	Current	Torque	Speed	Current	Power
	V	RPM	A	mN.m	RPM	A	w
PI-7124-1100	24	3600	1.80	539	3450	9.50	1100
PI-7112-30	12	2000	0.75	137	1750	3.04	30
PI-7124-30	24	2000	0.37	137	1750	1.52	30
PI-7190-30	90	2000	0.10	137	1750	0.40	30
PI-7112-60	12	3200	0.76	137	2900	4.70	60
PI-7124-60	24	3200	0.38	137	2900	2.35	60
PI-7190-60	90	3200	0.11	137	2900	0.62	60
PI-7112-450	12	2000	0.70	167	1750	3.40	450
PI-7124-45	24	2000	0.35	167	1750	1.70	45
PI-7190-45	90	2000	0.09	167	1750	0.46	45
PI-7112-80	12	3200	0.80	186	2900	6.40	80
PI-7124-80	24	3200	0.40	186	2900	3.20	80
PI-7190-80	90	3200	0.11	186	2900	0.85	80
PI-7124-80	24	3600	0.34	149	3200	2.78	80
PI-7190-80	90	3600	0.09	149	3200	0.74	80

Outline Drawing

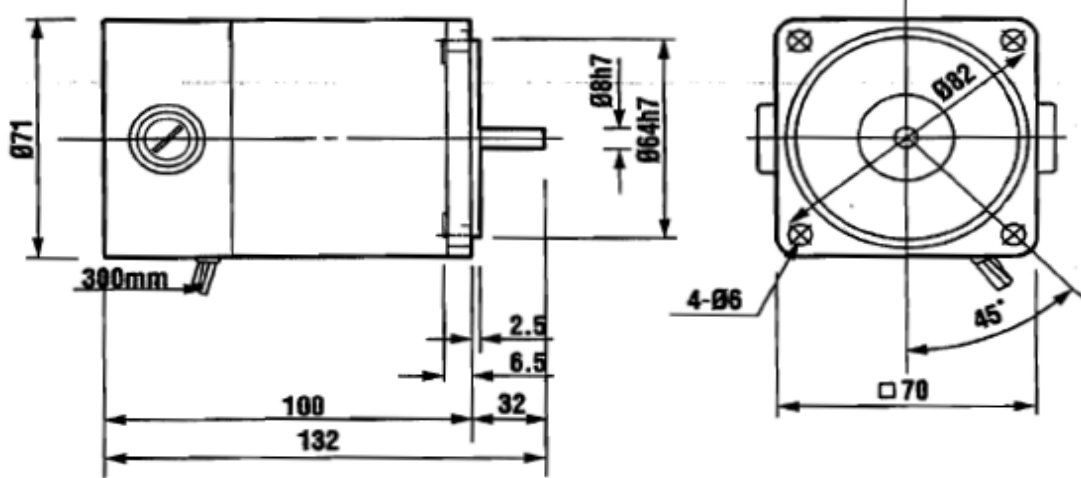


ΦD	L	Φd	P.C.D.	h	F
71	101	83	103	7	90

PI-7112-30

PI-7124-30

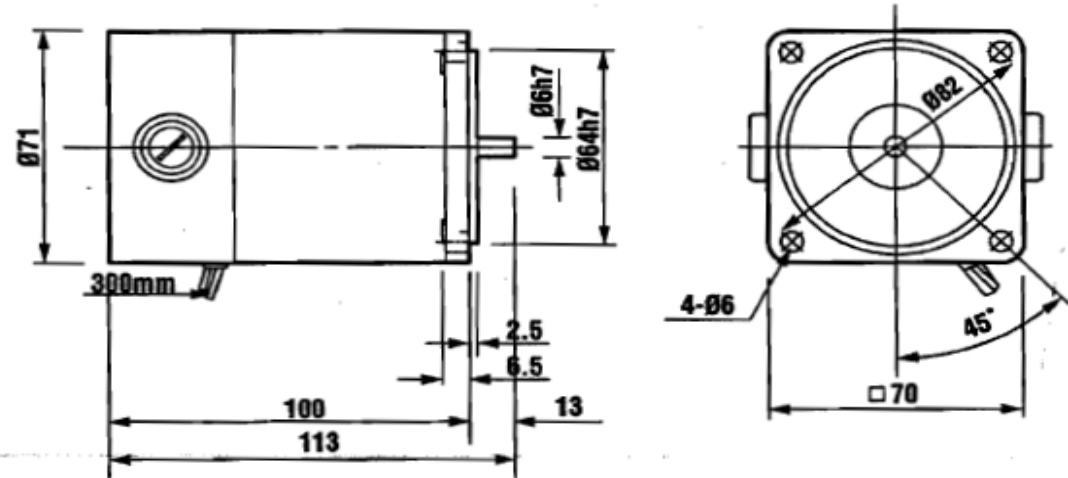
PI-7190-30



PI-7112-60

PI-7124-60

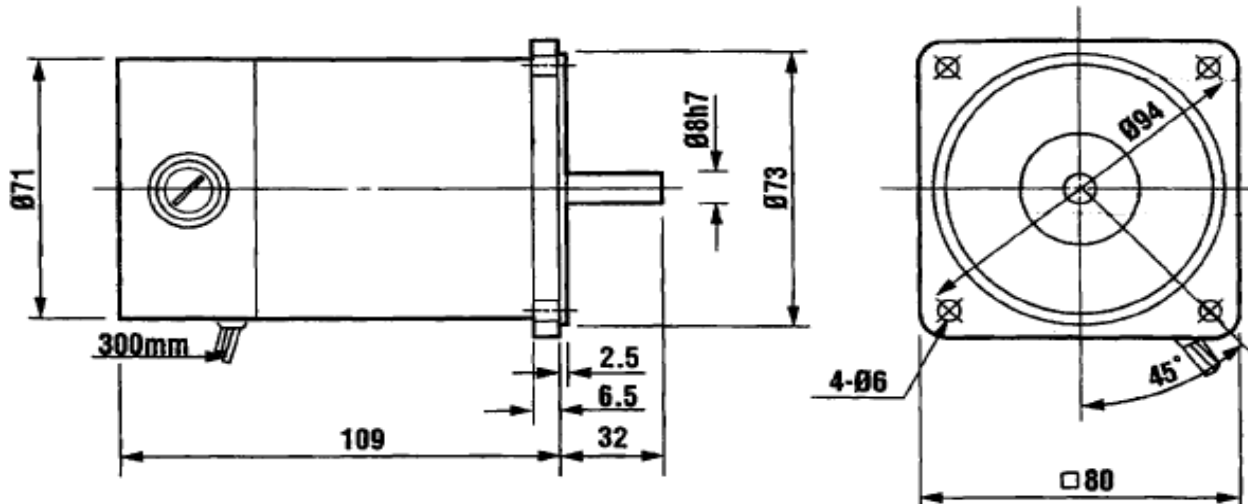
PI-7190-60

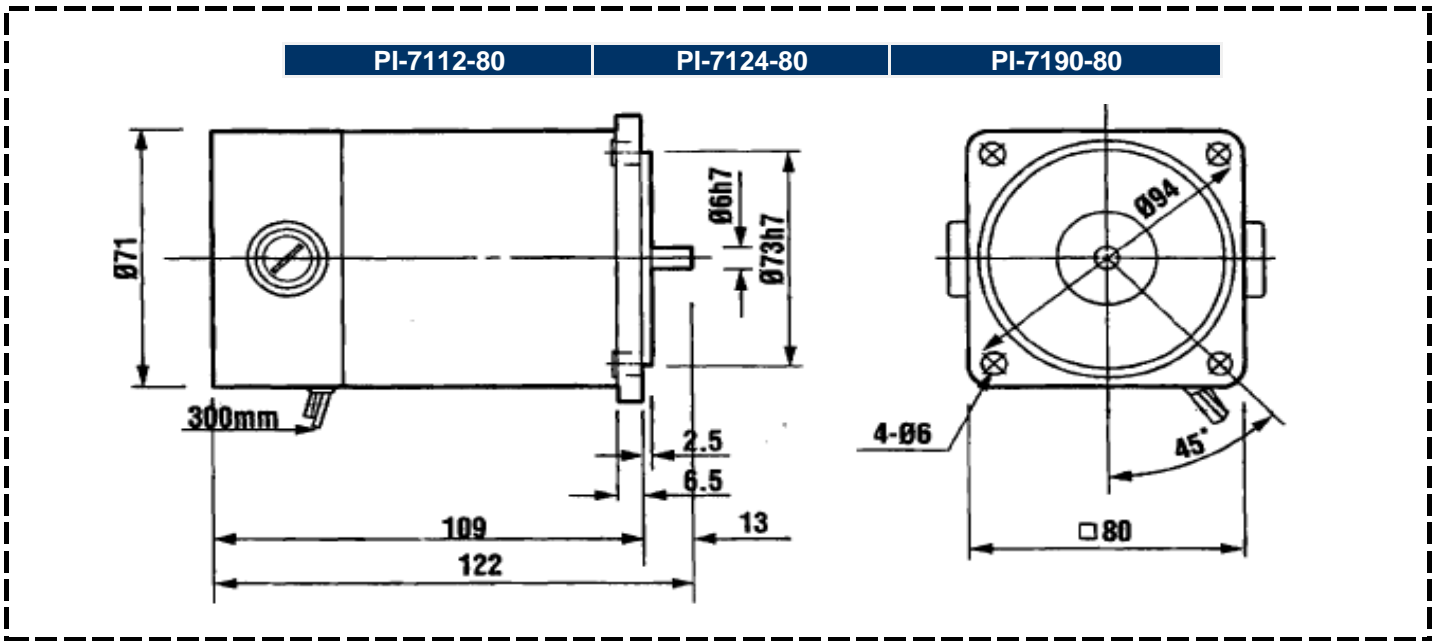


PI-7112-450

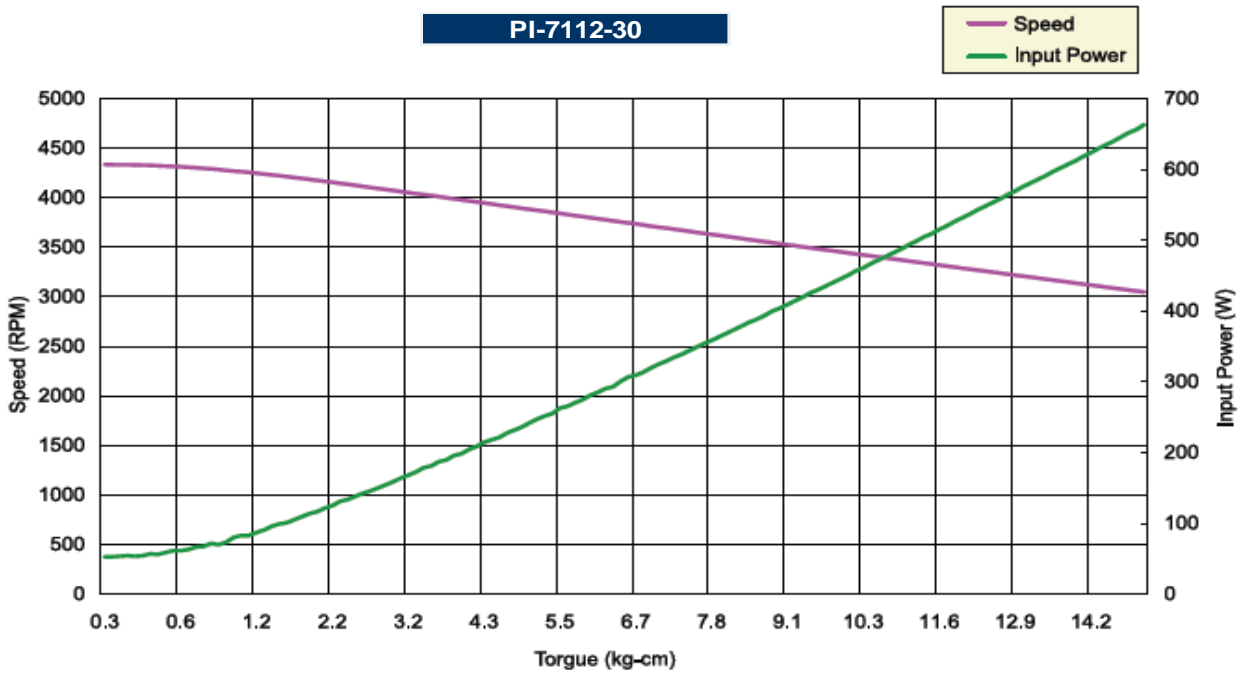
PI-7124-45

PI-7190-45



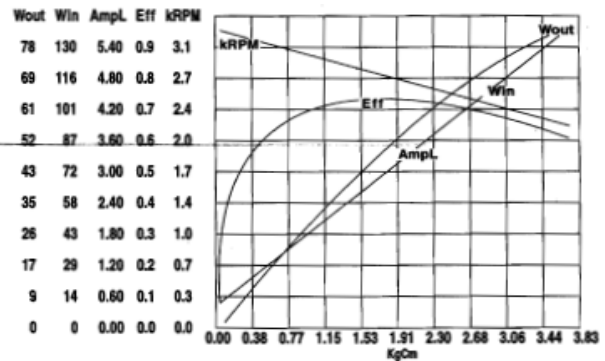
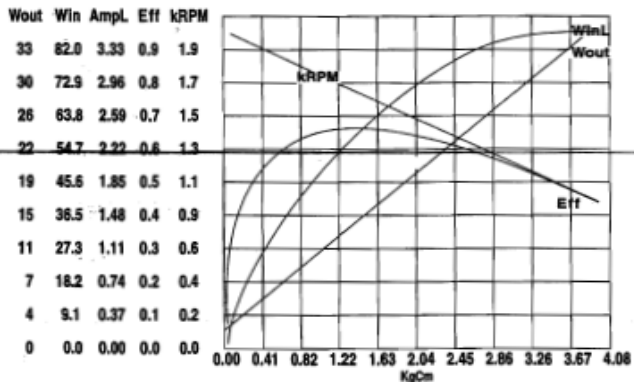


Performance Curve

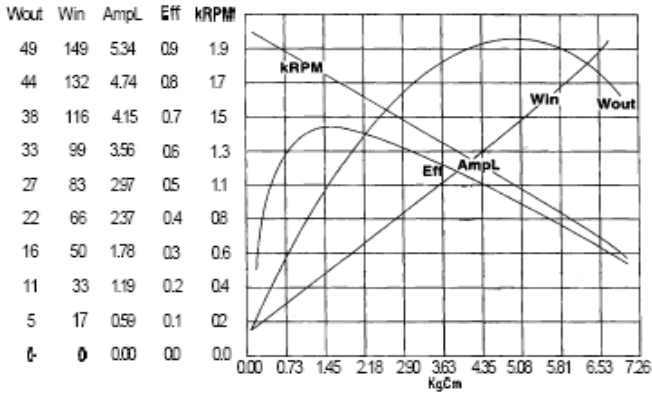


PI-7112-30
PI-7124-30
PI-7190-30

PI-7112-60
PI-7124-60
PI-7190-60



PI-7112-450
PI-7124-45
PI-7190-45



PI-7112-80
PI-7124-80
PI-7190-80

