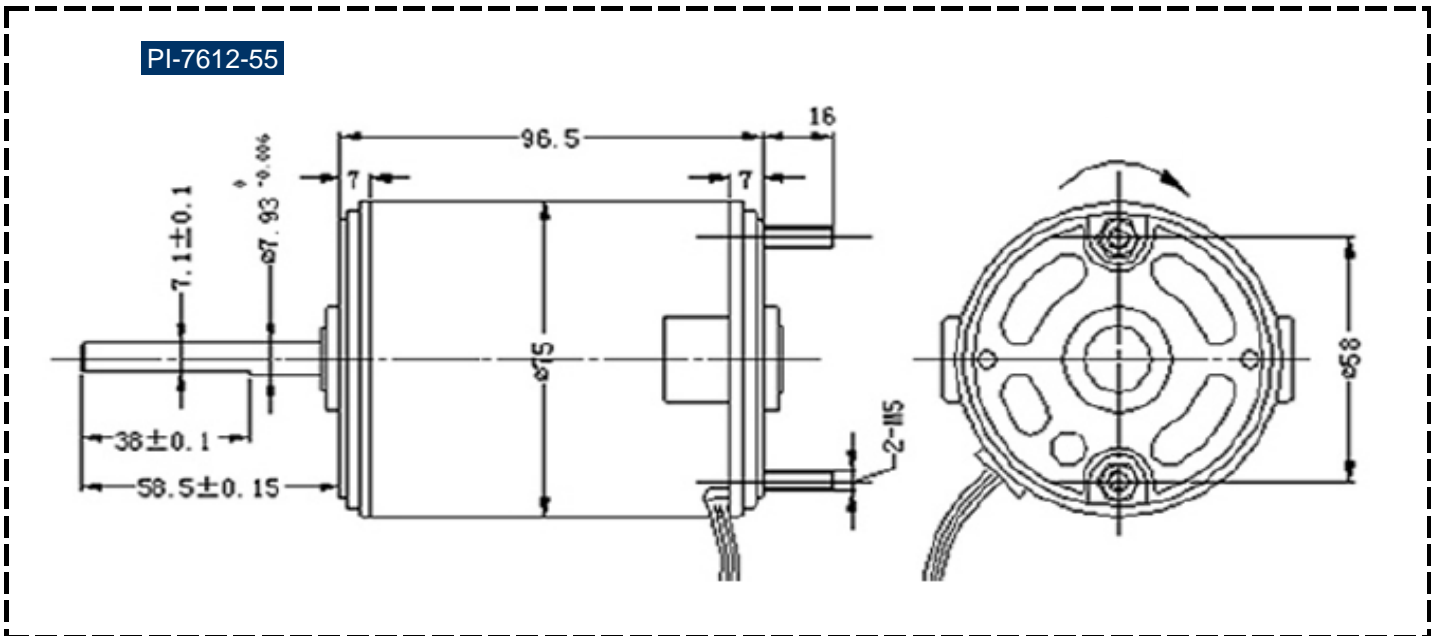


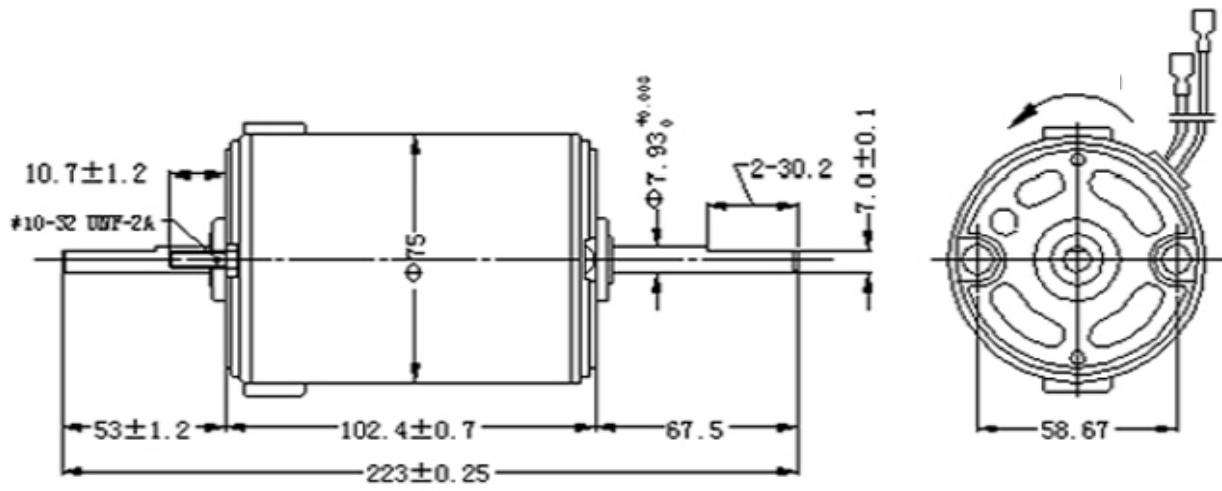
### Specification

Model No.	Voltage	No-Load		Load			Max. Output
		Speed	Current	Torque	Speed	Current	Power
	V	RPM	A	mN.m	RPM	A	w
PI-7612-55	12	3000±150	≤1.2	210	2510±50	≤5.9	55
PI-7612-81	12	3200±150	≤1.8	350	2220±50	≤11.0	81
PI-7612-77	12	3000±150	≤1.6	350	2100±50	≤10.9	77
PI-7612-82	12	3200±150	≤1.8	350	2242±50	≤11.1	82
PI-7612-56	12	2700±150	≤1.0	280	1925±50	≤8.0	56
PI-7612-37	12	2500±150	≤1.0	210	1700±50	≤6.7	37
PI-7612-10	12.7	950±50	≤1.0	110	835±50	≤1.7	9.6
PI-7612-24	12	2485±150	≤0.8	140	1652±50	≤4.6	24

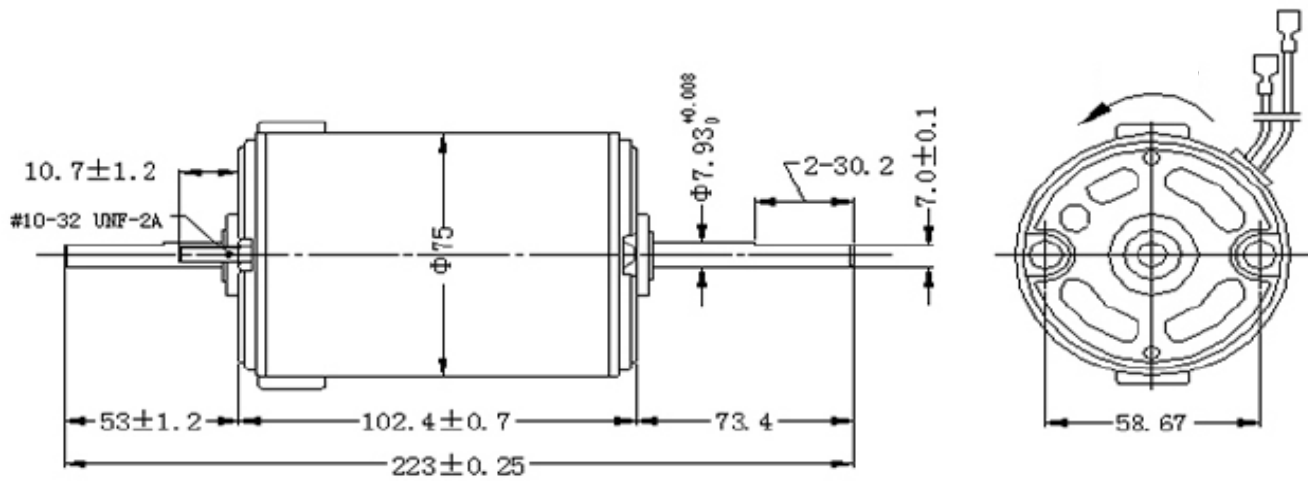
### Outline Drawing



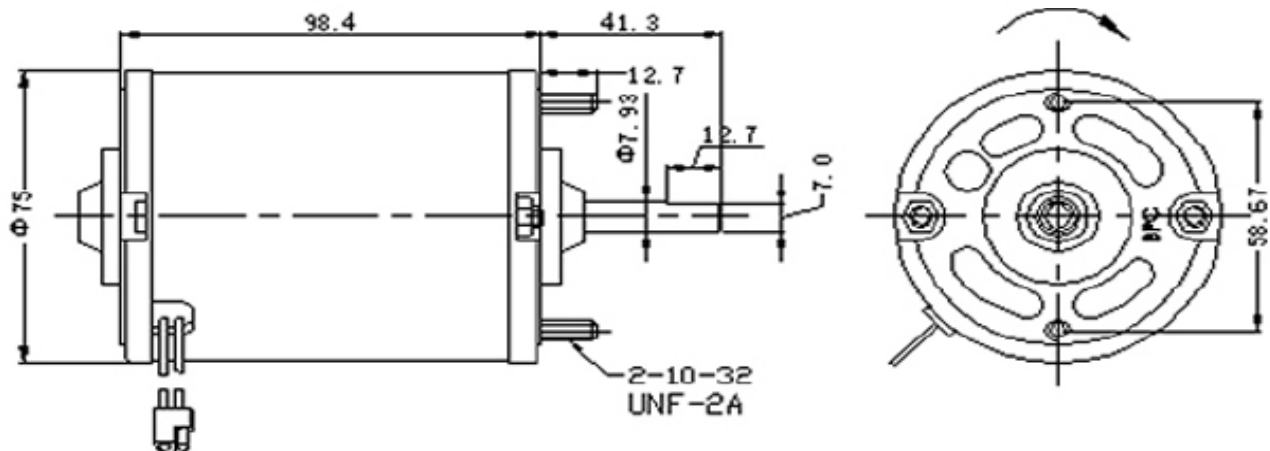
PI-7612-81 PI-7612-82 PI-7612-56 PI-7612-37



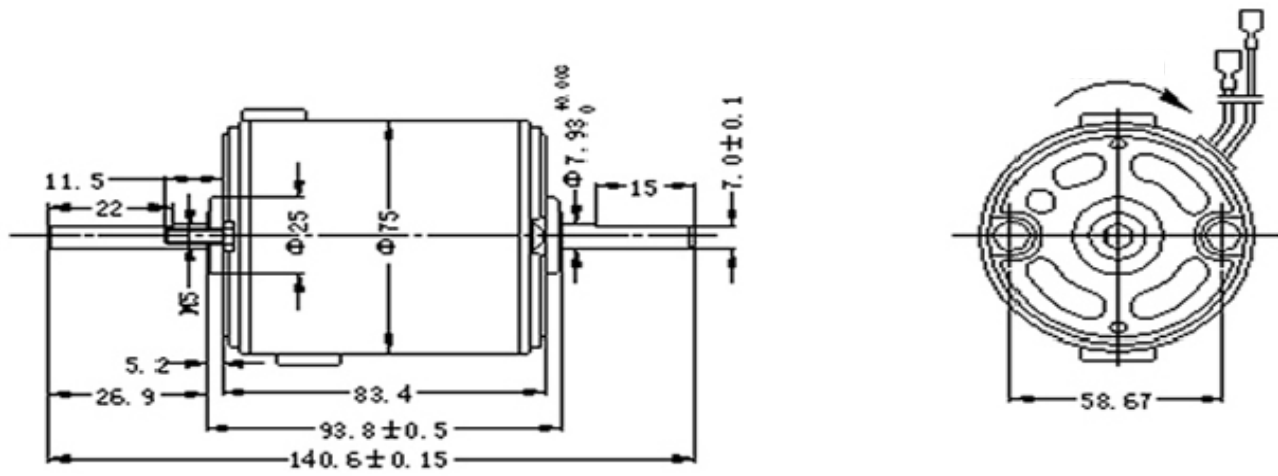
PI-7612-77



PI-7612-10

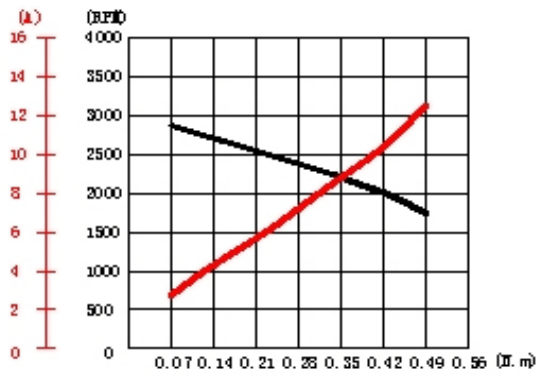


PI-7612-24

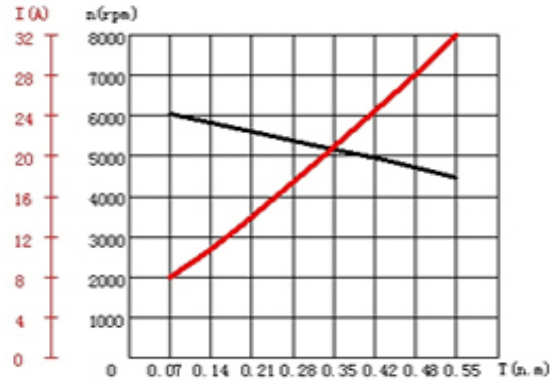


Performance Curve

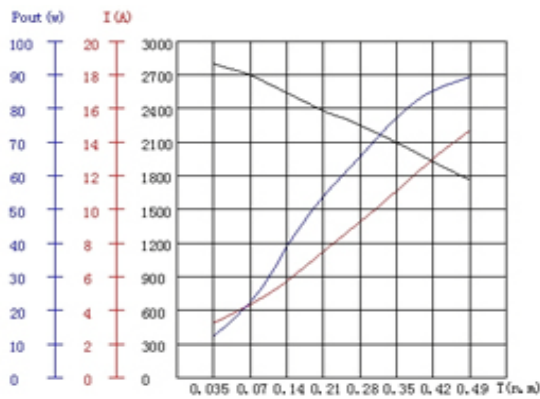
PI-7612-55



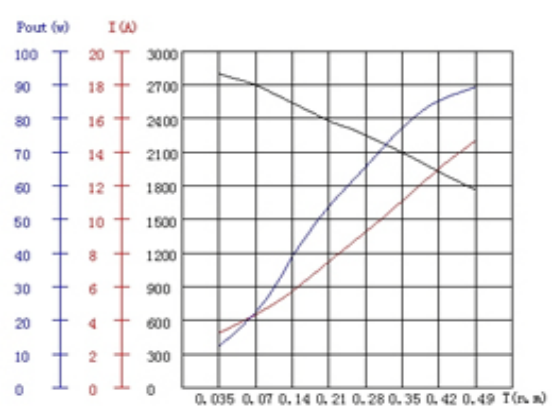
PI-7612-77



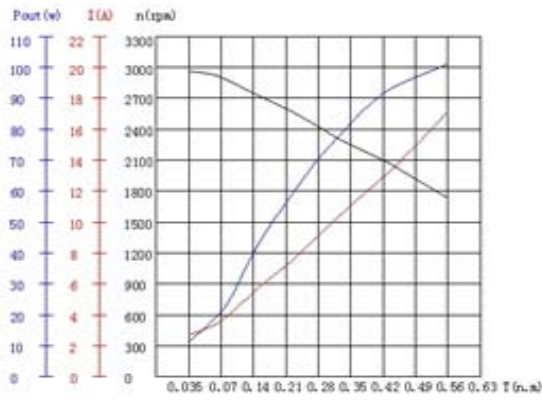
PI-7612-81



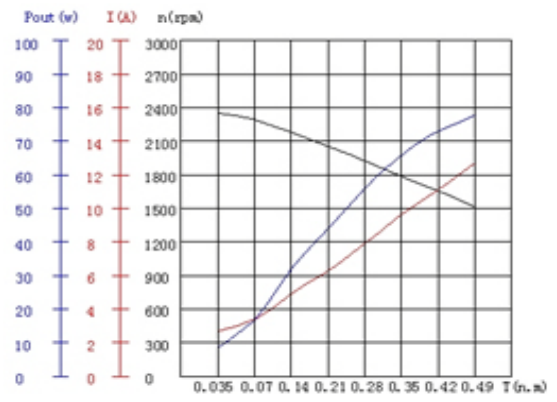
PI-7612-82



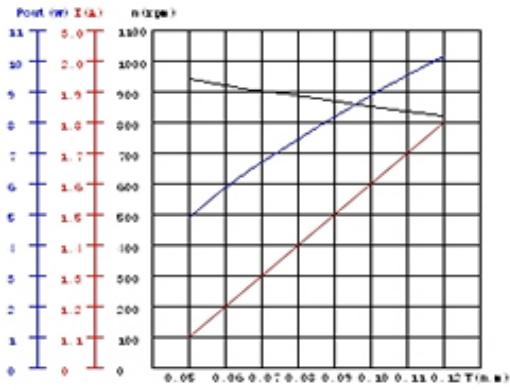
**PI-7612-56**



**PI-7612-37**



**PI-7612-10**



**PI-7612-24**

