

# AC PSC Motor

# 4.4"

TelcoMotion's standard AC motors provide a cost effective choice. Frame sizes of 3.3" and 4.4" are available. Rated output power is up to 1/6HP (120 Watts). We offer a variety of enclosures and mounting configurations.

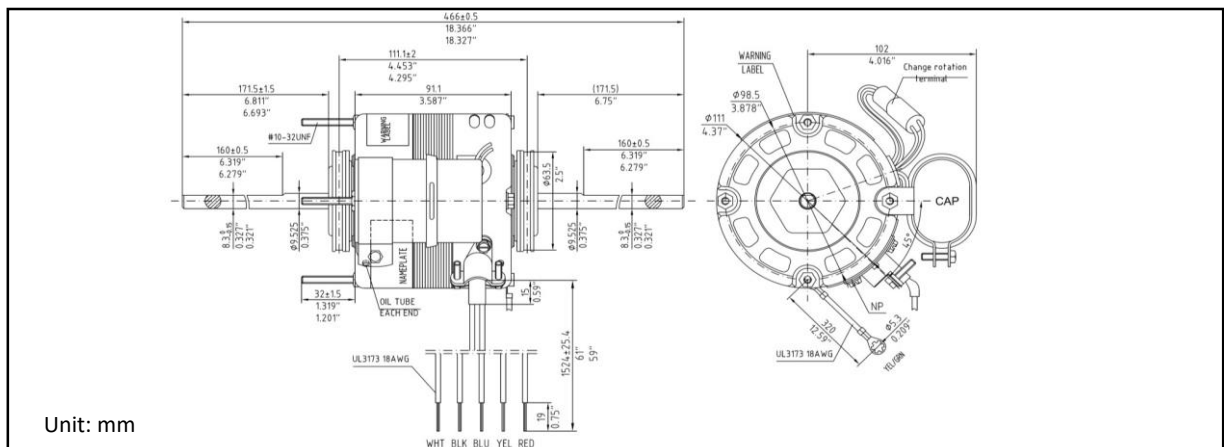
Frame Size	4.4" (112mm)
Motor Type	PSC (Permanent Split Capacitor)
Voltage	115VAC, 208 ~ 230VAC
Max. Output Power	1/6 HP (120W)
Max. Speed	1550 RPM
Number of Poles	4
Number of Speeds	3, 4
Number of Phase	1
Rotation	CW/CCW
Bearing Type	Sleeve Bearings
Insulation Class	B (130° C)
Enclosure	OPEN (Open Air-Over)
Options	Gearboxes



## Specifications:

Part Numbers	Output Power	Voltage, Frequency (V, Hz)	Speed (RPM)	Current (A)	# of Poles	# of Speeds	Rotation	Capacitor	Shaft Dimension
	(HP)								(Inch)
PSC-112-16-075	1/10	115V, 60Hz	1550	1.5	4	3	CW/CCW	5 MFD 370 VAC	3/8 x 6-3/4*
PSC-112-16-075	1/10	115V, 60Hz	1550	1.5	4	3	CW/CCW	5 MFD 370 VAC	1/2 x 6-3/4*
PSC-112-16-090	1/8	115V, 60Hz	1550	2	4	4	CW/CCW	5 MFD 370 VAC	1/2 x 6-3/4*
PSC-112-16-120	1/6	115V, 60Hz	1550	2.3	4	4	CW/CCW	5 MFD 370 VAC	1/2 x 6-3/4*

## Mechanical Drawing:



## Telco Intercontinental Corp.

9812 Whithorn Drive  
Houston, TX 77095  
www.telcointercon.com

sales@telcointercon.com  
(281) 855-2218



A division of **TELCO**