

NEMA AC Motor

NEMA48

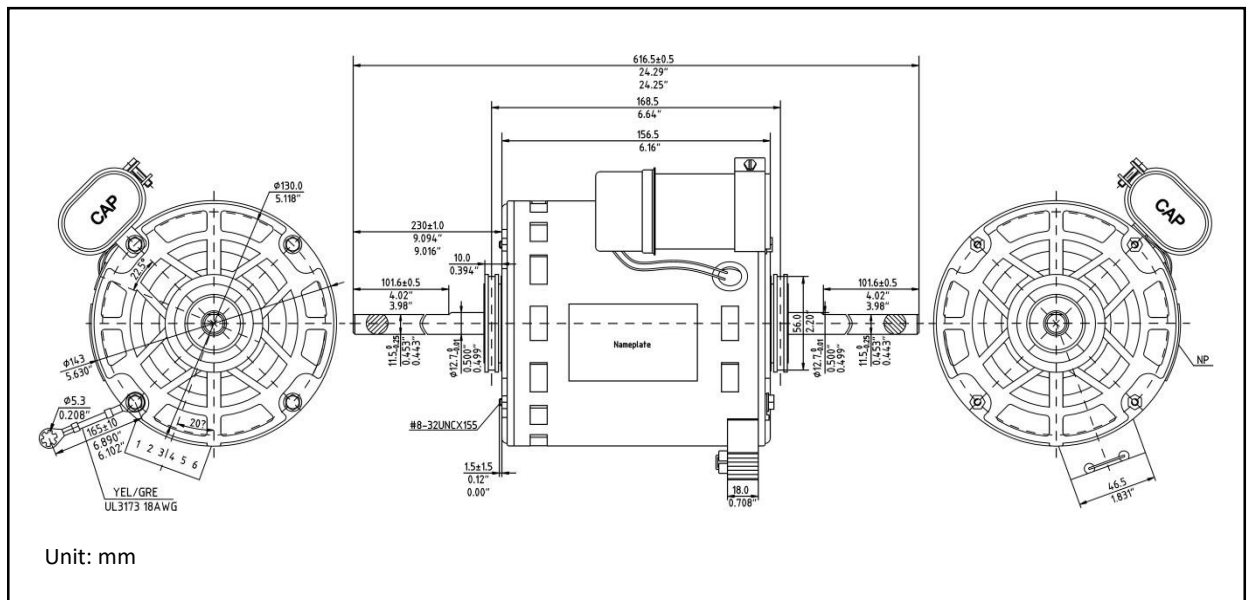
Frame Size	NEMA 42
Motor Type	PSC (Permanent Split Capacitor)
Voltage	115VAC, 227VAC
Max. Output Power	1/6 HP (120W)
Max. Speed	1725 RPM
Number of Poles	4, 6
Number of Speeds	4
Number of Phase	1
Rotation	CW/CCW
Bearing Type	Sleeve Bearings
Insulation Class	B (130° C)
Enclosure	OPEN (Open Air-Over)
Options	Gearboxes



Application:

- Heating and cooling equipment, blowers, kitchen hoods, medical equipment, medical pumps, fan coil units

Mechanical Drawing:



Telco Intercontinental Corp.

9812 Whithorn Drive
Houston, TX 77095
www.telcointercon.com

sales@telcointercon.com
(281) 855-2218

TELCO
MOTION
A division of **TELCO**

NEMA AC Motor

NEMA48

Specifications:

Part Numbers	Motor Type	Output Power		Voltage, Frequency (V, Hz)	Speed (RPM)	Current		# of Poles	# of Speeds	Rotation	Capacitor	Shaft Dimension		Enclosure
		(HP)				(A)						(Inch)		
AN48YSD180-164B	Split Phase	1/4		115V, 60Hz	1725	4.8		4	1	CW/CCW	-	1/2 x 1-1/2	1/2 x 1-1/2	ODP
AN48YSD250-164B	Split Phase	1/3		115V, 60Hz	1725	6.6		4	1	CW/CCW	-	1/2 x 1-1/2	1/2 x 1-1/2	ODP
AN48YSD180-764B	Split Phase	1/4		115/208-230V, 60Hz	1725	4.6/2.2-2.3		4	1	CW/CCW	-	1/2 x 1-1/2	1/2 x 1-1/2	ODP
AN48YSD250-164B	Split Phase	1/3		115V, 60Hz	1725	6.6		4	1	CW/CCW	-	1/2 x 1-1/2	1/2 x 1-1/2	ODP
AN48YSD120-764B	Split Phase	1/6		115/208-230V, 60Hz	1725	4.4/2.2-2.0		4	1	CW/CCW	-	1/2 x 1-1/2	1/2 x 1-1/2	ODP
AN48YSD180-764B	Split Phase	1/4		115/208-230V, 60Hz	1725	4.6/2.2-2.3		4	1	CW/CCW	-	1/2 x 1-7/8	1/2 x 1-7/8	ODP
AN48YSD250-764B	Split Phase	1/3		115/208-230V, 60Hz	1725	6.6/3.4-3.1		4	1	CW/CCW	-	1/2 x 1-7/8	1/2 x 1-7/8	ODP
AN48YSD375-764F	Split Phase	1/2		115/208-230V, 60Hz	1725	7.6/3.7-3.8		4	1	CW/CCW	-	1/2 x 1-7/8	1/2 x 1-7/8	ODP
AN48YSD180-164B	Split Phase	1/4		115V, 60Hz	1725	4.8		4	1	CW/CCW	-	1/2 x 1-1/2	1/2 x 1-1/2	ODP
AN48YSD120-164B	Split Phase	1/6		115V, 60Hz	1725	3.6		4	1	CW/CCW	-	1/2 x 1-1/2	1/2 x 1-1/2	ODP
AN48YSD250-164B	Split Phase	1/3		115V, 60Hz	1725	6.6		4	1	CW/CCW	-	1/2 x 1-1/2	1/2 x 1-1/2	ODP
AN48YSD375-164B	Split Phase	1/2		115V, 60Hz	1725	7.6		4	1	CW/CCW	-	1/2 x 1-1/2	1/2 x 1-1/2	ODP
AN48YSD180-164B	Split Phase	1/4		115V, 60Hz	1725	3.9		4	1	CW/CCW	-	1/2 x 1-1/2	1/2 x 1-1/2	ODP
AN48YSD180-164B	Split Phase	1/4		115V, 60Hz	1725	3.9		4	1	CW/CCW	-	1/2 x 1-1/2	1/2 x 1-1/2	ODP
AN48YSD375-164B	Split Phase	1/2		115V, 60Hz	1725	5.4		4	1	CW/CCW	-	1/2 x 1-1/2	1/2 x 1-1/2	ODP
AN48YSD180-164B	PSC	1/4		115V, 60Hz	1625	3		4	4	CW/CCW	-	1/2 x 1-1/2	1/2 x 1-1/2	ODP
AN48YSP375-164B	PSC	1/2		115V, 60Hz	1075	5.7		6	4	CW/CCW	7.5 MFD 370 VAC	1/2 x 8-1/2	1/2 x 8-1/2	ODP
AN48YSP375-164B	PSC	1/2		115V, 60Hz	1075	5.9		6	4	CW/CCW	10 MFD 370 VAC	1/2 x 8-1/2	1/2 x 8-1/2	ODP
AN48YSP375-164B	PSC	1/2		115V, 60Hz	1075	5.7		6	4	CW/CCW	20 MFD 370 VAC	5/8 x 3-1/16	5/8 x 2	TE
AN48YSP150-164B	PSC	1/2		115V, 60Hz	1725	6.8		4	1	CW/CCW	-	5/8 x 2	5/8 x 2	TE
AN48YSP150-164B	PSC	3/4-1/5		115V, 60Hz	1075	9.1-2.5		6	4	CW/CCW	2MDDV6, 2MDDV7	1/2 x 5	1/2 x 5	ODP
AN48YSP150-364B	PSC	3/4-1/5		208-230V, 60Hz	1075	4.4-1.6		6	4	CW/CCW	2MDDV6, 2MDDV7	1/2 x 5	1/2 x 5	ODP
AN48YSP120-364B	PSC	1/3-1/6		208-230V, 60Hz	825	2.2-1.0		8	4	CW/CCW	2MDDV6	1/2 x 5	1/2 x 5	ODP
AN48YSP150-364B	PSC	1/2-1/5		208-230V, 60Hz	825	3.3-1.3		8	4	CW/CCW	2MDDV7	1/2 x 6	1/2 x 6	ODP
AN48YSP150-164B	PSC	1/2-1/5		115V, 60Hz	1075	5.2-2.0		6	2	CW/CCW	2MDDV7	1/2 x 5	1/2 x 5	TE
AN48YSP150-364B	PSC	1/2-1/5		208-230V, 60Hz	1075	1.6-1.0		6	2	CW/CCW	2MDDV6, 2MDDV7	1/2 x 5	1/2 x 5	TE
AN48YSP120-364B	PSC	1/3-1/6		208-230V, 60Hz	825	2.2-1.0		8	2	CW/CCW	2MDDV6, 2MDDV7	1/2 x 5	1/2 x 5	TE
AN48YSP150-364B	PSC	1/2-1/5		208-230V, 60Hz	825	3.0-1.2		8	2	CW/CCW	2MDDV6, 2MDDV7	1/2 x 6	1/2 x 6	TE
AN48YSP150-664B	PSC	1/2-1/5		460V, 60Hz	1075	1.2-0.5		6	2	CW/CCW	2MDDV6, 2MDDV7	1/2 x 5	1/2 x 5	TE
AN48YSP150-664B	PSC	1/2-1/5		460V, 60Hz	825	1.3-0.6		8	2	CW/CCW	2MDDV6, 2MDDV7	1/2 x 6	1/2 x 6	TE

Telco Intercontinental Corp.

9812 Whithorn Drive
Houston, TX 77095
www.telcointercon.com

sales@telcointercon.com
(281) 855-2218

TELCO
MOTION
A division of **TELCO**