

Standard AC Motor

NEMA 56



Features

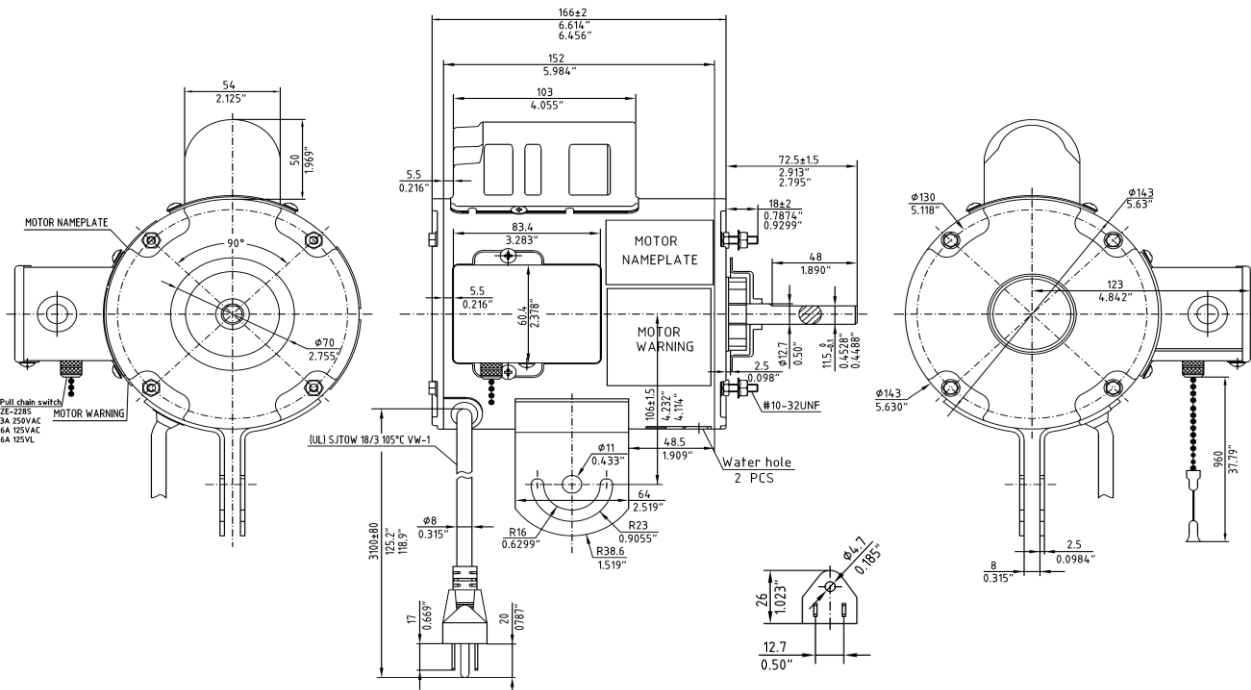
Frame Size	NEMA 56
Motor Type	Split Phase
Voltage	115VAC, 208 ~ 230VAC
Max. Output Power	3/4 HP (560W)
Max. Speed	1725 RPM
Number of Poles	4
Number of Speeds	1
Number of Phase	1
Rotation	CW/CCW
Bearing Type	Ball and Sleeve Bearings
Insulation Class	B (130° C), F(155° C)
Enclosure	ODP (Open Dripproof)
Options	Gearboxes



Specifications

Part Numbers	Motor Type	Output Power	Voltage, Frequency	Speed	Current	Number of Poles	Number of Speeds	Rotation	Capacitor	Shaft Dimension	Enclosure	Bearing Type	Insulation Class
		(HP)	(V, Hz)	(RPM)	(A)					(Inch)			
AN56HSD560-164B	Split Phase	3/4HP	115V, 60Hz	1725	11.6	4	1	CW/CCW	-	5/8 x 1-7/8	ODP	Ball	B
AN56HSD560-764F	Split Phase	3/4HP	115/208-230V, 60Hz	1725	11.6/5.9-5.8	4	1	CW/CCW	-	5/8 x 1-7/8	ODP	Ball	F
AN56HSD560-164F	Split Phase	3/4HP	115V, 60Hz	1725	11.6	4	1	CW/CCW	-	5/8 x 1-7/8	ODP	Ball	F
AN56ZSD375-164B	Split Phase	1/2HP	115V, 60Hz	1725	7.8	4	1	CW/CCW	-	1/2 x 1-1/2	ODP	Sleeve	B
AN56SD180-164B	Split Phase	1/4HP	115V, 60Hz	1725	4.8	4	1	CW/CCW	-	5/8 x 1-7/8	ODP	Sleeve	B
AN56SD250-164B	Split Phase	1/3HP	115V, 60Hz	1725	6.6	4	1	CW/CCW	-	5/8 x 1-7/8	ODP	Sleeve	B
AN56SD375-164B	Split Phase	1/2HP	115V, 60Hz	1725	7.2	4	1	CW/CCW	-	5/8 x 1-7/8	ODP	Sleeve	B
AN56ZSD180-164B	Split Phase	1/4HP	115V, 60Hz	1725	4.8	4	1	CW/CCW	-	1/2 x 1-1/2	ODP	Sleeve	B
AN56ZSD250-164B	Split Phase	1/3HP	115V, 60Hz	1725	6.6	4	1	CW/CCW	-	1/2 x 1-1/2	ODP	Sleeve	B
AN56SD375-764F	Split Phase	1/2HP	115/208-230V, 60Hz	1725	7.6/3.7-3.8	4	1	CW/CCW	-	5/8 x 1-7/8	ODP	Ball	F
AN56SD560-164F	Split Phase	3/4HP	115V, 60Hz	1725	8.4	4	1	CW/CCW	-	5/8 x 1-7/8	ODP	Ball	F
AN56YSD250-164B	Split Phase	1/3HP	115V, 60Hz	1725	4.4	4	1	CW/CCW	-	1/2 x 1-1/2	ODP	Sleeve	B

Dimensional Drawing



unit: mm